

Weekly Construction Update No. 17

Project ID: 5886-02-02 / 5866-02-03
Highway: Local Street – Woodland Drive
Location: Village of Waunakee and Town of Westport
Schedule: June 13, 2011 to September 30, 2011
Cost: \$1,862,917.75
Description: Street Reconstruction and Sanitary Sewer and Watermain Improvements
Contract Completion Date: October 26, 2011 (subject to change)

Traffic Impact: Woodland Drive will be closed to through traffic for the project limits. Motorist can expect to encounter daytime flagging operations and potential delays throughout the project limits. One lane of traffic will be maintained through the work zone for emergency vehicles.

Has LCS been updated? Yes No N/A

When was LCS updated? N/A

Who updated LCS? N/A

Work Completed since last update: **September 22, 2011 to September 29, 2011**

- Meise Construction will continue placing and grading base aggregate dense material (gravel) from Cobblestone Lane to Tierney Drive. Meise will continue work on the multiuse path from Cobblestone Lane north to Tierney Drive.
- Moore Surveying continued construction staking (layout) throughout the project.
- Voegeli Landscaping along with Meise Construction have maintained the erosion control throughout the project limits. Voegeli completed the restoration from Tierney Drive north to the project limits, including the detention basin north of Enchanted View Lane.
- H&K Contracting adjusted storm sewer and water main castings in preparation for the paving operation.

Anticipated work schedule for next week: **September 29, 2011 to October 6, 2011**

- The mobilization of equipment, staging equipment and traffic control will continue throughout the project.
- Moore Surveying will continue the construction staking (layout) as needed throughout the project.
- Meise Construction will continue placing and grading base aggregate dense material (gravel) from Cobblestone Lane to Tierney Drive. Meise will continue work on the multiuse path from Cobblestone Lane north to Tierney Drive.

- Boscobel Excavating will continue flat work, including all sidewalks and driveway approaches.
- Voegeli Landscaping along with Meise Construction will maintain the erosion control throughout the project limits. Voegeli will continue the restoration throughout the project limits as areas become available. Voegeli will start the railing for the retaining wall and multiuse path at Mill Road.
- Tri County Paving is tentatively scheduled to start paving the week of October 3, 2011. They will start with the binder (first layer) between the south project limits and Tierney Drive. When complete with this section the contractor will start the surface (last layer) for the entire project. **NOTE:** During the paving operation traffic patterns could change on a daily basis. This e-mail chain as well as the changeable message boards will be used to notify residents. Please allow extra travel time during the paving operation.

Summary:

Traffic pattern from Tierney Drive north will not change. Residents north of Tierney Drive will continue to access their residents from the north.

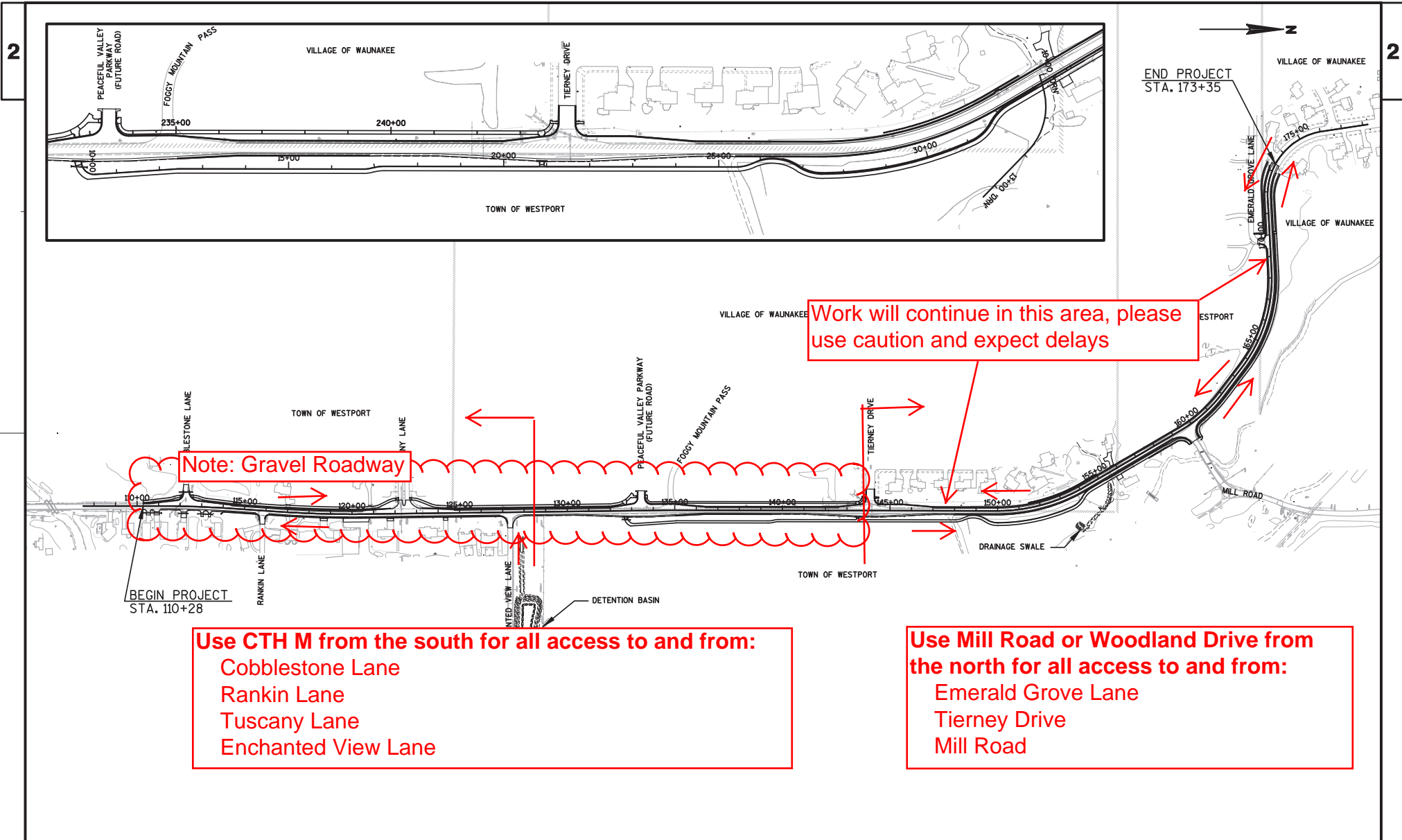
Residents south of Tierney Drive will continue to exit/enter from the south.

The contractors will continue to work between Peaceful Valley Parkway and the north project limits to complete the restoration and concrete work. Drivers are to use caution when driving and expect delays during the day.

Emergency vehicles will have access from Waunakee using Woodland Drive to all subdivisions.

The work zone starts just south of Cobblestone Lane and extends to Manchester Crossing. Please use caution and reduce speeds through this area to help prevent accidents.

**WEEKLY UPDATE NO. 17
NO TRAFFIC CHANGE**



Note: Gravel Roadway

Work will continue in this area, please use caution and expect delays

Use CTH M from the south for all access to and from:
 Cobblestone Lane
 Rankin Lane
 Tuscany Lane
 Enchanted View Lane

Use Mill Road or Woodland Drive from the north for all access to and from:
 Emerald Grove Lane
 Tierney Drive
 Mill Road

NOTE: THIS IS A GENERAL WEEKLY OVERVIEW AND MAY CHANGE AT ANYTIME WITHOUT NOTICE