

## YAHARA HEIGHTS

Westport, WI



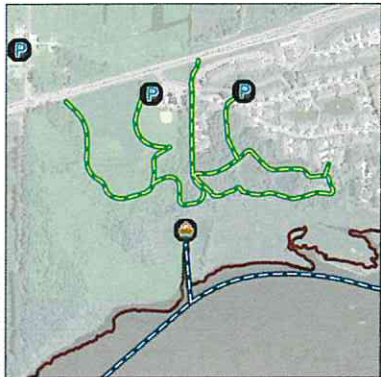
## HOLY WISDOM

Middleton, WI



## JACKSON LANDING

Westport, WI



## SIX MILE CREEK

Waunakee, WI



## RESOURCES

Additional Information:

For more information on pedestrian safety, you can visit the following locations:

**Town of Westport**  
5387 Mary Lake Road  
Waunakee, WI 53597  
(608)849-4372  
<http://www.townofwestport.org>

Locate interesting facts and statistics by visiting **Wisconsin Department of Transportation's** website at the link below.  
<http://www.dot.wisconsin.gov/travel/bike-foot/ped-index.htm>

Find a park or trail by viewing the **Wisconsin Department of Natural Resource's** website at <http://dnr.wi.gov/topic/parks/findapark.html>

For more information about hiking, you can visit:

- [www.americanhiking.org](http://www.americanhiking.org)
- [www.npca.org](http://www.npca.org)
- [www.hikinginfo.com](http://www.hikinginfo.com)



South of the Yahara River

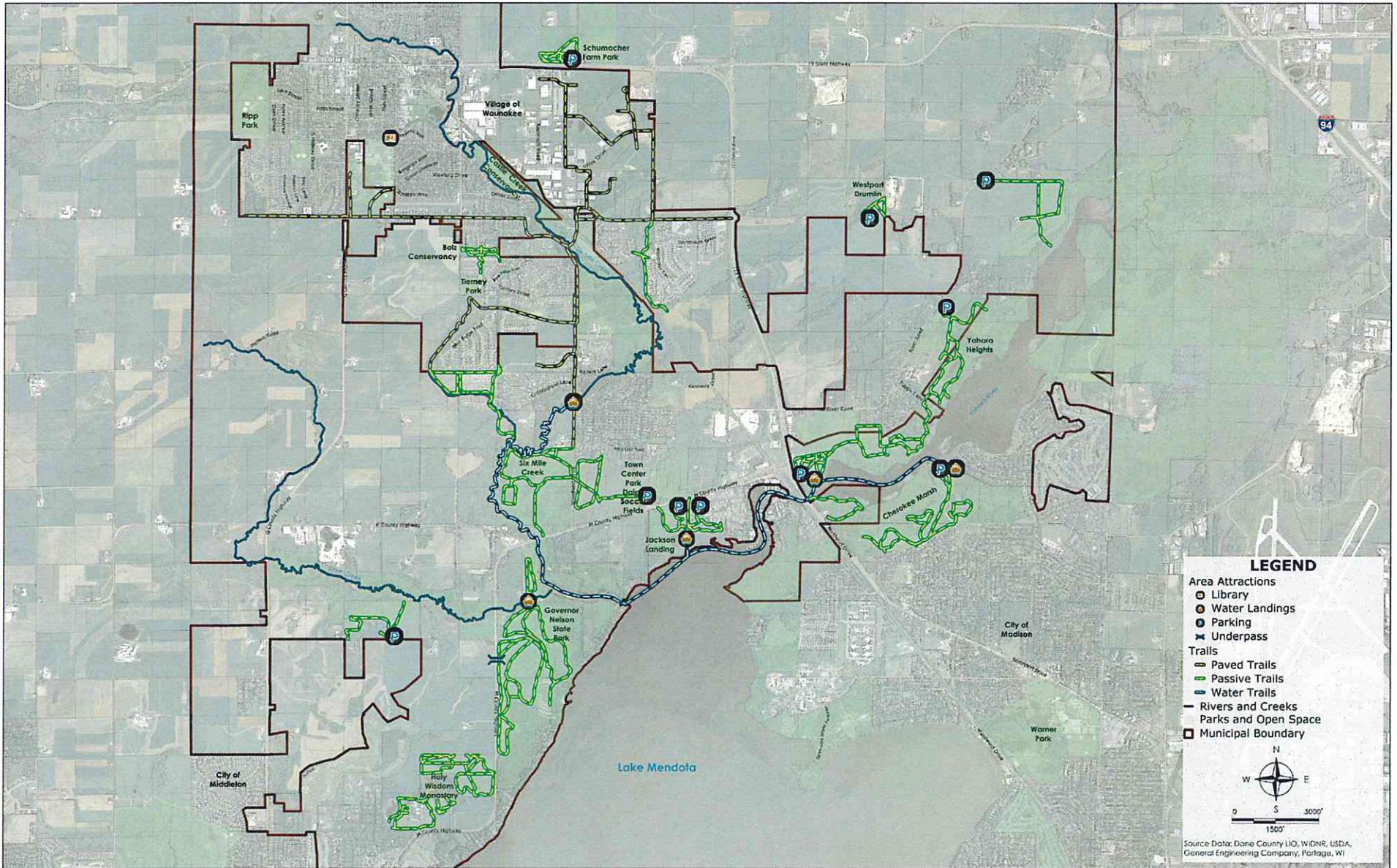
Disclaimer: The user of this brochure should maintain appropriate judgment and decisions while hiking on trails. The contributors of this brochure are not responsible for the actions of the individual.

## Town of Westport

**A Pedestrian Trails Guide**



**The Town of Westport  
Kennedy Administration Building  
5387 Mary Lake Road  
Waunakee, WI 53597**



**LEGEND**

**Area Attractions**

- Library
- Water Landings
- Ⓟ Parking
- Ⓧ Underpass

**Trails**

- Paved Trails
- Passive Trails
- Water Trails

**Rivers and Creeks**

**Parks and Open Space**

▭ Municipal Boundary

N  
W E  
S  
0 3000'  
1500'

Source Data: Dane County L&D, W/DNR, USDA, General Engineering Company, Portage, WI