

# **Middleton Westport Joint Zoning Committee Agenda**

**Thursday      December 14, 2017      5:30 PM**  
**To be Held in Council Chambers at City Hall**  
**7426 Hubbard Avenue, Middleton WI, 53562**

Posted on the City's web site at <http://sire.cityofmiddleton.us>

## **Roll Call**

## **Approval of Minutes**

- 1.)      Approve Minutes of 11/16/17**

## **Agenda Items**

- 1.)      Specific Implementation Plan (SIP) and Design Review - Bob Davis/Inspire Early Childhood Learning Center, 5821 Oncken Rd. (Town of Westport) (PC 2532)  
Discussion and Recommendation**

## **Adjournment**

## **Posted:**

It is possible that members of and possibly a quorum of members of other governmental bodies of the municipality may be in attendance at this meeting to gather information; however, no action will be taken by any governmental body at this meeting other than the governmental body specifically referenced in this notice.

Any person who has a qualifying disability as defined by the American With Disabilities Act that requires the meeting or materials at the meeting to be in an accessible location or format must contact the City Administrator at (608) 821-8350, 7426 Hubbard Ave., Middleton, WI at least 24 hours prior to the commencement of the meeting so that any necessary arrangements can be made to accommodate each request.

**MINUTES**  
**MIDDLETON/WESTPORT JOINT ZONING COMMITTEE**  
**THURSDAY      NOVEMBER 16, 2017                      5:30 pm**

**PRESENT:** Dean Grosskopf, Ken Sipsma and Cyndi Kennedy, Town of Westport; Dennis Dorn and, Leif Hubbard, City of Middleton

**ABSENT:** Kurt Paulsen, City of Middleton

**ALSO PRESENT:** Eileen Kelley, Tom Wilson

**1.      Call to Order**

Chair Dorn called the meeting to order at 5:30 p.m.

**2.      Approve Minutes of 9/28/17**

Moved by Grosskopf, seconded by Sipsma, to approve the minutes of 9/28/17. Motion carried 5-0.

Moved by Kennedy, seconded by Grosskopf, to reorder the agenda items. Motion carried 5-0.

**3.      Pre-Annexation Agreement – Redtail Ackers/Bill Ranguette (St. Somewhere, Inc.), 4821 CTH Q (PC 2528, Annex 221), Discussion/Recommendation**

Following discussion, moved by Hubbard, seconded by Grosskopf, to recommend approval of the pre-annexation agreement contingent on provisions added that would require that the following be approved prior to the annexation: stormwater management, access issues, Highway Q improvements, density, and plantings and berming for a buffer to the existing neighborhood to the north. Motion carried 5-0.

**4.      Proposed General Implementation Plan (GIP) Amendment, The Community of Bishops Bay, The Back Nine Neighborhood, Increased Density (Amending Map #3) (PC 2189), Discussion/Recommendation**

Moved by Grosskopf, seconded by Kennedy, to defer this item. Motion carried 5-0.

**5.      Public Hearing – 6:00 pm – Request for Rezoning from Agricultural to Planned Development District (PDD) – General Implementation Plan (GIP) at 5821 Oncken Rd. – Bob Davis/Inspire Nature Center Preschool (PC 2532)**

Chairperson Dorn opened the public hearing at 6 p.m., and there being no public comment immediately closed the hearing.

Committee members discussed the proposed use. The consensus was that this is a good transitional use between the Community of Bishops Bay subdivision and the open space and community separation to the north and east in the Town of Westport, with the understanding that issues such as stormwater management, traffic and access will need to be worked out. Wilson noted that the Town Engineer will review the access and any need for improvements, and the amount of any necessary dedication along CTH M and Oncken Rd.

Moved by Hubbard, seconded by Sipsma, to recommend approval of the rezoning contingent on conditions as specified by the Town of Westport Plan Commission. Motion carried 5-0.

**6.      Adjourn**

Moved by Sipsma, seconded by Kennedy, to adjourn. Motion carried 5-0, and the meeting adjourned at 6:04 p.m.

EILEEN KELLEY

---

# MEMORANDUM

## Planning Department – City of Middleton

---

DATE: December 6, 2017  
TO: Middleton/Westport Joint Zoning Committee  
FROM: Eileen Kelley, Planning Director  
SUBJECT: Staff Comments – 12/14/17 meeting

---



### **Specific Implementation Plan (SIP) and Design Review – Bob Davis/Inspire Early Childhood Learning Center, 5821 Oncken Rd. (Town of Westport) (PC 2532)**

BACKGROUND: The Specific Implementation Plan and design review plans have been submitted for this project, which recently received General Implementation Plan approval. The project is on 40 acres in the Town of Westport, and will include an approximately 22,700 sq. ft. early childhood learning center, a 2,400 sq. ft. barn for animals, drop off area, and parking lot. It will also include outdoor play areas, mowed nature walking paths, and pasture areas for the animals

RECOMMENDATION: Recommend approval contingent on resolution of any staff, Joint Committee, Plan Commission, Town Plan Commission or Board comments.

ENCLOSURES: Specific Implementation Plan narrative, site plans, building elevations and other building and site details include proposed lighting

**Design Review Application  
Inspire - Early Childhood Learning Center  
Town of Westport, Wisconsin**



Iconica  
901 Deming Way  
Madison, Wisconsin 53571  
November 28, 2017

Thomas G Wilson  
Kennedy Administration Building  
5387 Mary Lake Road  
Waunakee, WI 53597

To Whom It May Concern:

As a representative of Inspire Early Childhood Learning Center, I am submitting this application for a Design Review Application for the property located at 5821 Oncken Road in the Town of Westport, WI.

**1. Description of site and proposed plan:**

The existing property includes 40 acres of agricultural land, surrounded by other agricultural lands and adjacent to Governor Nelson State Park. At the northeast corner of the property lie the intersection of Oncken Road and Hwy M. The site is relatively flat with a gradual slope from the northeast corner cresting near the southwest corner of the property where the main building will be situated.

The proposed development intends to preserve much of the natural features of the existing site and utilize outdoor spaces for learning. Area for an east-west bike path is planned to connect Governor Nelson State Park to a proposed trail system within the Town of Westport. Additional area along County Highway M is also planned to connect a future County bike path trail system to Governor Nelson State Park.

Views of the adjacent state park, surrounding agricultural land, and tree line will remain intact. There are two proposed structures included in this plan. The primary building will be a single story education center with a partial basement. The footprint of this building will be approximately 22,700 square feet. The secondary structure will be a 2,400 square foot barn to house animals. The site plan intends to provide a covered drop off zone at the front of the building and an employee parking lot, including a total of 60 parking stalls. Outdoor play areas, sports field, mowed nature walking paths and pastures for animals will be included as well.

A monument sign in the southwest corner near Highway M is proposed, as well as entrance signage near the access road entrance in the northeast corner of the site. There is no proposed wall mounted signage on the building.

**2. A statement of rationale as to why Planned Development District zoning is proposed:**

We seek a change to a Planned Development District Zoning so that we can build Inspire Early Childhood Learning Center; a nature based early education and care program primarily for children 5 years of age and younger. This program is designed to nurture advanced early childhood foundations by utilizing a campus with nature trails, gardens, interactive playgrounds and large animals to present children with unique learning opportunities from which to form strong and skilled dispositions for learning. Our goal is to better prepare children for their primary education and to nurture the character and qualities that are common in highly successful people. We request the zoning change to allow for large animals in conjunction with the educational use. We believe the community will benefit



from having this unique high quality early childhood program available to them and the additional childcare services it inherently provides. 2016 4C (Community Coordinated Child Care) data showed a negative capacity to enrollment measurement for Middleton indicating that the childcare enrollment for the area may be exceeding its capacity. The addition of Inspire Early Childhood Learning Center to the Middleton area next year would quickly provide additional services for area families and support the areas future growth.

**3. Brief analysis of social and economic impacts on the community of the project, and positive relationships to the Master Plan:**

The social and economic impacts of this project will be significant. The school will bring about 50 jobs to the area and an additional tax base to the community. It will be a great benefit to the local workforce as it provides an essential service needed for many parents to choose to enter the work force. High quality education is also a major factor in why families choose areas to live in. This new unique and high quality early childhood program will fit in nicely as the foundation builder for the high quality education that Waunakee and Middleton schools are known for. This type of school also fits in well with the current and planned development in the area. The 40 acre learning center campus will consist mostly of green space and natural topology. It will blend in perfectly with the beautiful rolling hills and natural grassy fields of Governor Nelson State Park and Dorn Creek Fishery and Wildlife area. Our students will also be able to use these areas effectively as interesting and educational areas to explore and appreciate.

**4. General outline of the intended organizational structure for a property owners association, if any; deed restrictions and provisions for private provision of common services, if any:**

This is not applicable to the proposed project. There will be no property owners association for this property.

**5. Statement of Historical Designation Status:**

This property is not designated as a historic landmark. The Town of Westport has requested to be allowed to complete additional survey work near the southern property line to determine if any signs of historic trail systems are present.

In summary, we believe that this proposed development will be a great addition to the area. We look forward to working with the City of Middleton and Town of Westport to develop a project that will become an amenity to families in the community and surrounding area.

Sincerely,

A handwritten signature in black ink, appearing to read 'Jenny Dechant', with a stylized flourish at the end.

Jenny Dechant  
Iconica



PLANT MATERIAL



DUMPSTER ENCLOSURE



FENCING











## Site Location

**Concept image of proposed Barn (Utility Building)**



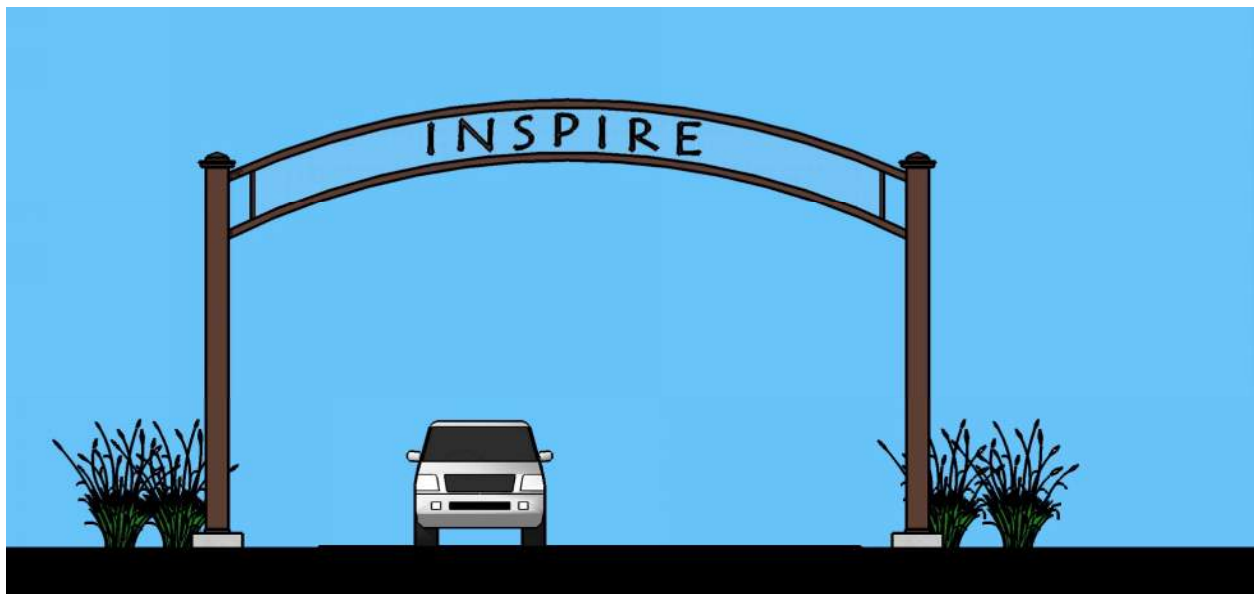
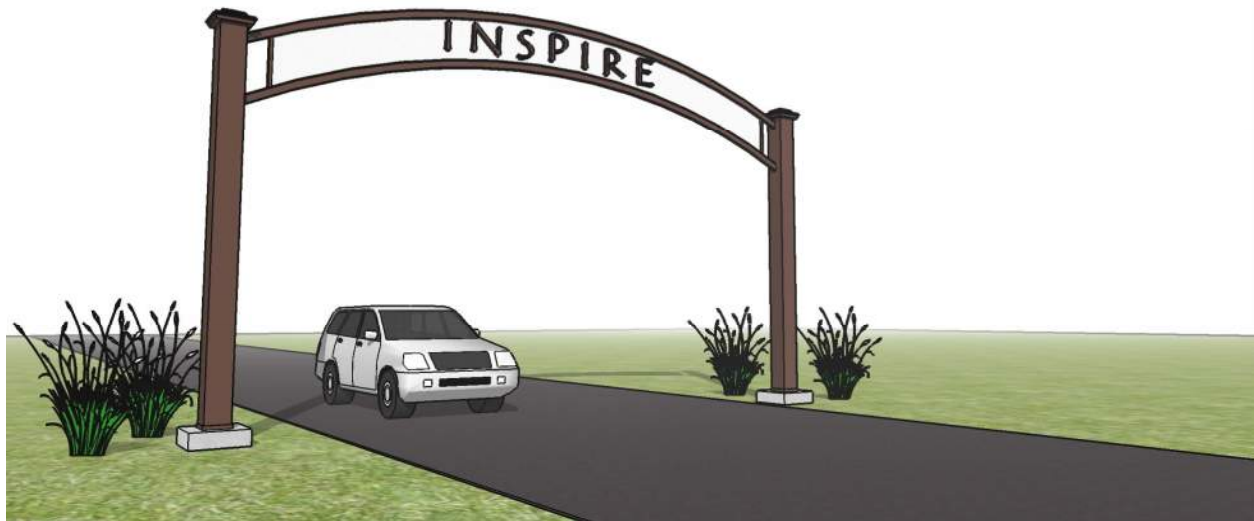
**Concept image of monument sign**





ICONICA

**Concept images of Entry Gateway Arch**

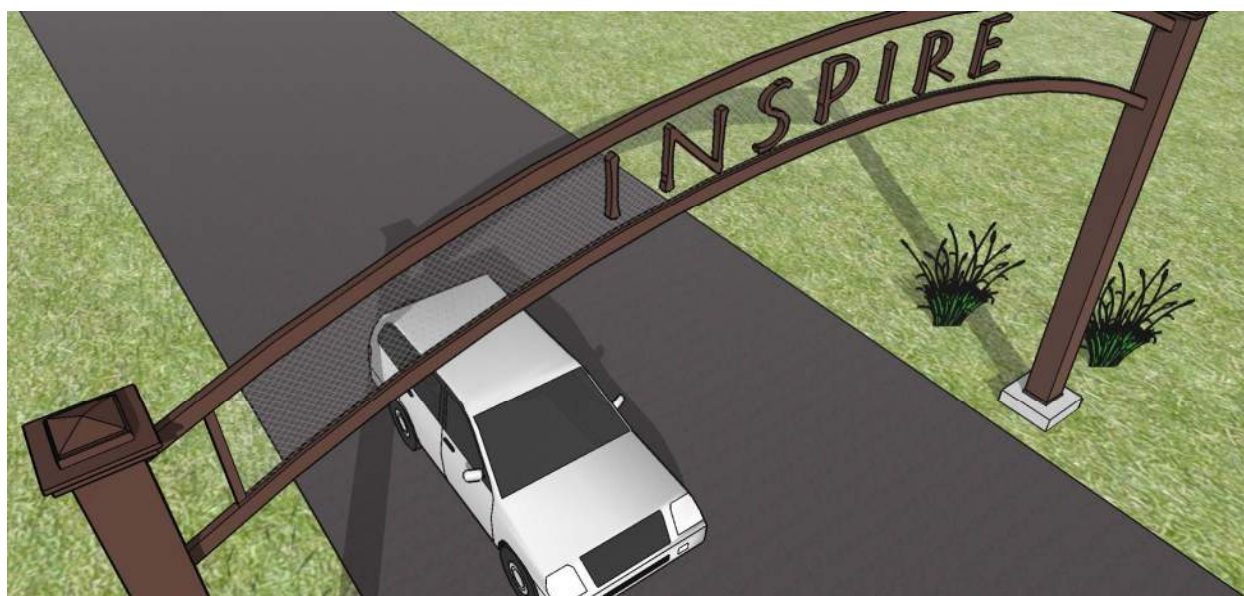






ICONICA

**Concept images of Entry Gateway Arch**



# **INSPIRE ECLC**

## **SITE LIGHTING FIXTURE SPECIFICATIONS**

**ICONICA**

11-28-2017





# D-Series Size 2 LED Area Luminaire



**TYPE S1**  
DSX2 LED P1 40K T1S MVOLT SPA DNAXD  
15' POLE

**Notes**  
**TYPE S2**  
DSX2 LED P2 40K T4M MVOLT SPA DNAXD  
20' POLE

Hit the Tab key or mouse over the page to see all interactive elements.

## Specifications

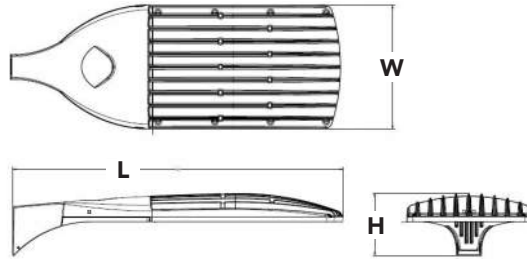
**EPA:** 1.1 ft<sup>2</sup>  
(0.10 m<sup>2</sup>)

**Length:** 40"  
(101.6 cm)

**Width:** 15"  
(38.1 cm)

**Height:** 7-1/4"  
(18.4 cm)

**Weight (max):** 36 lbs  
(16.3 kg)



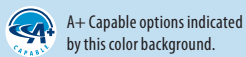
## Capable Luminaire

This item is an A+ capable luminaire, which has been designed and tested to provide consistent color appearance and system-level interoperability.

- All configurations of this luminaire meet the Acuity Brands' specification for chromatic consistency
- This luminaire is A+ Certified when ordered with DTL® controls marked by a **shaded background**. DTL DLL equipped luminaires meet the A+ specification for luminaire to photocontrol interoperability<sup>1</sup>
- This luminaire is part of an A+ Certified solution for ROAM® or XPoint™ Wireless control networks, providing out-of-the-box control compatibility with simple commissioning, when ordered with drivers and control options marked by a **shaded background**<sup>1</sup>

To learn more about A+, visit [www.acuitybrands.com/aplus](http://www.acuitybrands.com/aplus).

1. See ordering tree for details.
2. A+ Certified Solutions for ROAM require the order of one ROAM node per luminaire. Sold Separately: [Link to Roam](#); [Link to DTL DLL](#)



## Ordering Information

**EXAMPLE: DSX2 LED P7 T3M MVOLT SPA DDBXD**

DSX2 LED						
Series	LEDs	Color temperature	Distribution	Voltage	Mounting	
DSX2 LED	<b>Forward optics</b>	30K 3000 K	T1S Type I Short	T5VS Type V Very Short	MVOLT <sup>4</sup>	<b>Shipped included</b>
	P1 P5	40K 4000 K	T2S Type II Short	T5S Type V Short		SPA Square pole mounting
	P2 P6	50K 5000 K	T2M Type II Medium	T5M Type V Medium		RPA Round pole mounting
	P3 P7	AMBPC Amber phosphor converted <sup>2,3</sup>	T3S Type III Short	T5W Type V Wide		WBA Wall bracket
	P4 P8		T3M Type III Medium	BLC Backlight control <sup>2,3</sup>		SPUMBA Square pole universal mounting adaptor <sup>7</sup>
	<b>Rotated optics<sup>1</sup></b>		T4M Type IV Medium	LCCO Left corner cutoff <sup>2,3</sup>		RPUMBA Round pole universal mounting adaptor <sup>7</sup>
	P10 P13	TFTM Forward Throw Medium	RCCO Right corner cutoff <sup>2,3</sup>	<b>Shipped separately</b>		
	P11 P14			KMA8 DDBXD U Mast arm mounting bracket adaptor (specify finish) <sup>8</sup>		
	P12					
Control options				Other options	Finish (required)	
<b>Shipped installed</b>				<b>Shipped installed</b>		
PER	NEMA twist-lock receptacle only (no controls) <sup>9</sup>	PIRH1FC3V	Bi-level, motion sensor, 15'-30' mounting height, ambient sensor enabled at 1fc <sup>13</sup>	HS House-side shield <sup>17</sup>	DDBXD Dark bronze	
PER5	Five-wire receptacle only (no controls) <sup>9,10</sup>	BL30	Bi-level switched dimming, 30% <sup>11,14</sup>	SF Single fuse (120, 277, 347V) <sup>7</sup>	DBLXD Black	
PER7	Seven-wire receptacle only (no controls) <sup>9,10</sup>	BL50	Bi-level switched dimming, 50% <sup>11,14</sup>	DF Double fuse (208, 240, 480V) <sup>7</sup>	DNAXD Natural aluminum	
DMG	0-10V dimming extend out back of housing for external control (no controls)	PNMTDD3	Part night, dim till dawn <sup>15</sup>	L90 Left rotated optics <sup>1</sup>	DWHXD White	
		PNMTSD3	Part night, dim 5 hrs <sup>15</sup>	R90 Right rotated optics <sup>1</sup>	DDBTXD Textured dark bronze	
DS	Dual switching <sup>11,12</sup>	PNMT6D3	Part night, dim 6 hrs <sup>15</sup>	BS Bird spikes	DBLBXD Textured black	
PIRH	Bi-level, motion/ambient sensor, 15-30' mounting height, ambient sensor enable at 5fc <sup>13</sup>	PNMT7D3	Part night, dim 7 hrs <sup>15</sup>		DNATXD Textured natural aluminum	
		FAO	Field Adjustable Output <sup>16</sup>		DWHGXD Textured white	



## Ordering Information

### Accessories

Ordered and shipped separately.

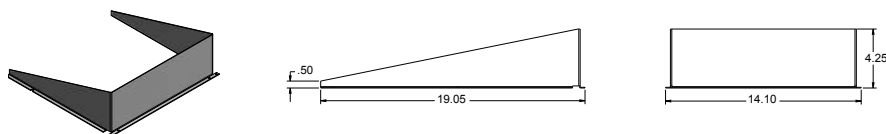
DLL127F 1.5 JU	Photocell - SSL twist-lock (120-277V) <sup>18</sup>
DLL347F 1.5 CUL JU	Photocell - SSL twist-lock (347V) <sup>18</sup>
DLL480F 1.5 CUL JU	Photocell - SSL twist-lock (480V) <sup>18</sup>
DSHORT SBK U	Shorting cap <sup>18</sup>
DSX2HS 80C U	House-side shield for 80 LED unit <sup>4</sup>
DSX2HS 90C U	House-side shield for 90 LED unit <sup>4</sup>
DSX2HS 100C U	House-side shield for 100 LED unit <sup>4</sup>
PUMBA DDBXD U*	Square and round pole universal mounting bracket (specify finish) <sup>19</sup>
KMA8 DDBXD U	Mast arm mounting bracket adaptor (specify finish) <sup>17</sup>

For more control options, visit [DTL](#) and [ROAM](#) online.

### NOTES

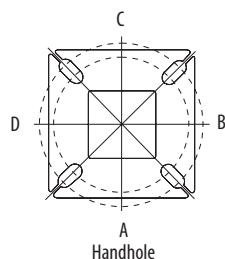
- P10, P11, P12 or P14 and rotated optics (L90, R90) only available together.
- AMBPC not available with BLC, LCCO, RCCO, HS or P5, P7, P8, P13 or P14.
- Not available with HS.
- MVOLT driver operates on any line voltage from 120-277V (50/60 Hz).
- Single fuse (SF) requires 120V, 277V or 347V. Double fuse (DF) requires 208V, 240V or 480V.
- Not available with BL30, BL50 or PNMT options.
- Existing drilled pole only. Available as a separate combination accessory; for retrofit use only: PUMBA (finish) U; 1.5 G vibration load rating per ANCI C136.31.
- Must order fixture with SPA option. Must be ordered as a separate accessory; see Accessories information. For use with 2-3/8" mast arm (not included).
- Photocell ordered and shipped as a separate line item from Acuity Brands Controls. See accessories. Not available with DS option. Shorting Cap included.
- If ROAM® node required, it must be ordered and shipped as a separate line item from Acuity Brands Controls. Node with integral dimming. Shorting Cap included.
- Requires (2) separately switched circuits. See Outdoor Control Technical Guide for details.
- Provides 50/50 fixture operation via (2) independent drivers. Not available with PER, PER5, PER7, PIR or PIRH.
- Reference Motion Sensor table on page 3.
- Not available with 347V, 480V, DS and PNMT. For PER5 or PER7 see PER Table on page 3.
- Not available with 347V, 480V, DS, BL30, BL50. For PER5 or PER7 see PER Table on page 3. Separate Dusk to Dawn required.
- Not available with other dimming controls options.
- Not available with BLC, LCCO and RCCO distribution. Also available as a separate accessory; see Accessories information.
- Requires luminaire to be specified with PER, PER5 and PER7 option. Ordered and shipped as a separate line item from Acuity Brands Controls.
- For retrofit use only.

## External Glare Shield



## Drilling

### HANDHOLE ORIENTATION



### Tenon Mounting Slipfitter\*\*

Tenon O.D.	Single Unit	2 at 180°	2 at 90°	3 at 120°	3 at 90°	4 at 90°
2-3/8"	AST20-190	AST20-280	AST20-290	AST20-320	AST20-390	AST20-490
2-7/8"	AST25-190	AST25-280	AST25-290	AST25-320	AST25-390	AST25-490
4"	AST35-190	AST35-280	AST35-290	AST35-320	AST35-390	AST35-490

### Pole drilling nomenclature: # of heads at degree from handhole (default side A)

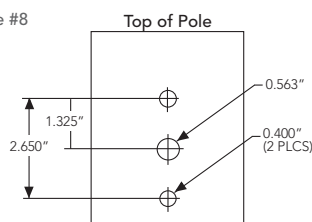
DM19AS	DM28AS	DM29AS	DM32AS	DM39AS	DM49AS
1 @ 90°	2 @ 280°	2 @ 90°	3 @ 120°	3 @ 90°	4 @ 90°
Side B	Side B & D	Side B & C	Round pole only	Side B, C, & D	Sides A, B, C, D

Note: Review luminaire spec sheet for specific nomenclature

Pole top or tenon O.D.	4.5" @ 90°	4" @ 90°	3.5" @ 90°	3" @ 90°	4.5" @ 120°	4" @ 120°	3.5" @ 120°	3" @ 120°
DSX SPA	Y	Y	Y	N	-	-	-	-
DSX RPA	Y	Y	N	N	Y	Y	Y	Y
DSX SPUMBA	Y	N	N	N	-	-	-	-
DSX RPUMBA	N	N	N	N	Y	Y	Y	N

\*3 fixtures @ 120 require round pole top/tenon.

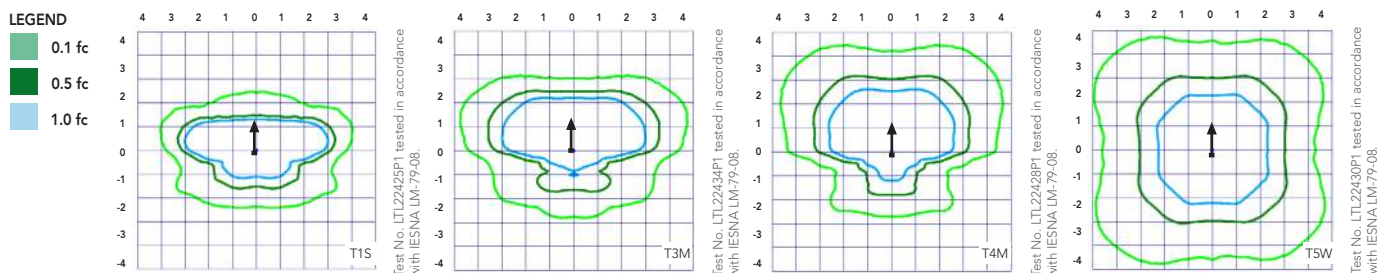
Template #8



## Photometric Diagrams

To see complete photometric reports or download .ies files for this product, visit Lithonia Lighting's [D-Series Area Size 2 homepage](#).

Isofootcandle plots for the DSX2 LED 80C 1000 40K. Distances are in units of mounting height (30').



## Performance Data

### Lumen Ambient Temperature (LAT) Multipliers

Use these factors to determine relative lumen output for average ambient temperatures from 0-40°C (32-104°F).

Ambient		Lumen Multiplier
0°C	32°F	1.04
5°C	41°F	1.04
10°C	50°F	1.03
15°C	59°F	1.02
20°C	68°F	1.01
<b>25°C</b>	<b>77°F</b>	<b>1.00</b>
30°C	86°F	0.99
35°C	95°F	0.98
40°C	104°F	0.97

### Projected LED Lumen Maintenance

Data references the extrapolated performance projections for the platforms noted in a **25°C ambient**, based on 10,000 hours of LED testing (tested per IESNA LM-80-08 and projected per IESNA TM-21-11).

To calculate LLF, use the lumen maintenance factor that corresponds to the desired number of operating hours below. For other lumen maintenance values, contact factory.

Operating Hours	0	25000	50000	100000
Lumen Maintenance Factor	1.00	0.96	0.92	0.85

### Electrical Load

					Current (A)					
	Performance Package	LED Count	Drive Current	Wattage	120	208	240	277	347	480
S1 S2  Forward Optics (Non-Rotated)	P1	80	530	140	1.18	0.68	0.59	0.51	0.40	0.32
	P2	80	700	185	1.56	0.90	0.78	0.66	0.52	0.39
	P3	80	850	217	1.82	1.05	0.90	0.80	0.63	0.48
	P4	80	1050	270	2.27	1.31	1.12	0.99	0.79	0.59
	P5	80	1250	321	2.68	1.54	1.34	1.17	0.93	0.68
	P6	100	1050	343	2.89	1.66	1.59	1.37	1.00	0.71
	P7	100	1250	398	3.31	1.91	1.66	1.45	1.16	0.81
	P8	100	1350	431	3.61	2.07	1.81	1.57	1.25	0.91
	P10	90	530	156	1.30	0.76	0.65	0.62	0.45	0.32
	P11	90	700	207	1.75	1.01	0.87	0.74	0.60	0.46
	P12	90	850	254	2.12	1.22	1.06	0.94	0.73	0.55
	P13	90	1200	344	2.88	1.65	1.44	1.25	1.00	0.73
	P14	90	1400	405	3.39	1.95	1.71	1.48	1.18	0.86
	Rotated Optics (Requires L90 or R90)									

Motion Sensor Default Settings						
Option	Dimmed State	High Level (when triggered)	Photocell Operation	Dwell Time	Ramp-up Time	Ramp-down Time
PIR or PIRH	3V (37%) Output	10V (100%) Output	Enabled @ 5FC	5 min	3 sec	5 min
*PIR1FC3V or PIRH1FC3V	3V (37%) Output	10V (100%) Output	Enabled @ 1FC	5 min	3 sec	5 min

\*for use with Inline Dusk to Dawn or timer.

PER Table						
Control	PER (3 wire)	PER5 (5 wire)		PER7 (7 wire)		
			Wire 4/Wire5		Wire 4/Wire5	Wire 6/Wire7
Photocontrol Only (On/Off)	✓	⚠	Wired to dimming leads on driver	⚠	Wired to dimming leads on driver	Wires Capped inside fixture
ROAM	✗	✓	Wired to dimming leads on driver	⚠	Wired to dimming leads on driver	Wires Capped inside fixture
ROAM with Motion (ROAM on/off only)	✗	⚠	Wires Capped inside fixture	⚠	Wires Capped inside fixture	Wires Capped inside fixture
Future-proof*	✗	⚠	Wired to dimming leads on driver	✓	Wired to dimming leads on driver	Wires Capped inside fixture
Future-proof* with Motion	✗	⚠	Wires Capped inside fixture	✓	Wires Capped inside fixture	Wires Capped inside fixture

✓ Recommended
✗ Will not work
⚠ Alternate

\*Future-proof means: Ability to change controls in the future.

## Performance Data

### Lumen Output

Lumen values are from photometric tests performed in accordance with IESNA LM-79-08. Data is considered to be representative of the configurations shown, within the tolerances allowed by Lighting Facts. Contact factory for performance data on any configurations not shown here.

#### Forward Optics

LED Count	Drive Current	Power Package	System Watts	Dist. Type	30K (3000 K, 70 CRI)						40K (4000 K, 70 CRI)					50K (5000 K, 70 CRI)					AMBPC (Amber Phosphor Converted)				
					Lumens	B	U	G	LPW	Lumens	B	U	G	LPW	Lumens	B	U	G	LPW	Lumens	B	U	G	LPW	
S1	80	530	P1	140W	T1S	17,575	3	0	3	126	18,933	3	0	3	135	19,173	3	0	3	137	10,752	2	0	2	78
					T2S	17,556	3	0	3	125	18,913	3	0	3	135	19,152	3	0	3	137	10,554	2	0	2	77
					T2M	17,647	3	0	3	126	19,010	3	0	3	136	19,251	3	0	3	138	10,571	2	0	2	77
					T3S	17,090	3	0	3	122	18,411	3	0	3	132	18,644	3	0	3	133	10,548	2	0	2	77
					T3M	17,604	3	0	3	126	18,964	3	0	3	135	19,204	3	0	3	137	10,569	2	0	2	77
					T4M	17,221	3	0	3	123	18,552	3	0	4	133	18,787	3	0	4	134	10,547	2	0	2	77
					TFTM	17,593	3	0	3	126	18,952	3	0	4	135	19,192	3	0	4	137	10,741	1	0	2	78
					TSVS	18,297	4	0	1	131	19,711	4	0	1	141	19,961	4	0	1	143	11,155	3	0	0	81
					TSS	18,312	4	0	2	131	19,727	4	0	2	141	19,977	4	0	2	143	11,149	3	0	0	81
					TSM	18,266	4	0	2	130	19,677	4	0	2	141	19,926	4	0	2	142	11,096	3	0	2	81
					TSW	18,146	5	0	3	130	19,548	5	0	3	140	19,796	5	0	3	141	10,957	3	0	2	80
					BLC	14,424	2	0	2	103	15,539	2	0	3	111	15,736	2	0	3	112					
					LCCO	10,733	1	0	3	77	11,562	1	0	3	83	11,709	2	0	3	84					
					RCCO	10,733	1	0	3	77	11,562	1	0	3	83	11,709	2	0	3	84					
					T1S	22,305	3	0	3	121	24,029	3	0	3	130	24,333	3	0	3	132	13362	2	0	2	71
					T2S	22,281	3	0	4	120	24,003	3	0	4	130	24,307	3	0	4	131	13116	2	0	2	70
					T2M	22,396	3	0	3	121	24,127	3	0	3	130	24,432	3	0	3	132	13138	2	0	2	70
					T3S	21,690	3	0	4	117	23,366	3	0	4	126	23,662	3	0	4	128	13110	2	0	2	70
					T3M	22,342	3	0	4	121	24,068	3	0	4	130	24,373	3	0	4	132	13135	2	0	3	70
					T4M	21,857	3	0	4	118	23,545	3	0	4	127	23,844	3	0	4	129	13108	2	0	2	70
	80	700	P2	185W	TFTM	22,328	3	0	4	121	24,054	3	0	4	130	24,358	3	0	4	132	13349	2	0	2	71
					TSVS	23,222	5	0	1	126	25,016	5	0	1	135	25,333	5	0	1	137	13864	3	0	1	74
					TSS	23,241	4	0	2	126	25,037	4	0	2	135	25,354	4	0	2	137	13856	3	0	1	74
					TSM	23,182	5	0	3	125	24,974	5	0	3	135	25,290	5	0	3	137	13790	3	0	2	73
					TSW	23,030	5	0	4	124	24,810	5	0	4	134	25,124	5	0	4	136	13617	4	0	2	72
					BLC	18,307	2	0	3	99	19,721	2	0	3	107	19,971	2	0	3	108					
					LCCO	13,622	2	0	3	74	14,674	2	0	4	79	14,860	2	0	4	80					
					RCCO	13,622	2	0	3	74	14,674	2	0	4	79	14,860	2	0	4	80					
					T1S	26,202	3	0	3	121	28,226	3	0	3	130	28,584	3	0	3	132					
					T2S	26,174	3	0	4	121	28,196	3	0	4	130	28,553	3	0	4	132					
	80	850	P3	217W	T2M	26,309	3	0	3	121	28,342	3	0	3	131	28,700	3	0	3	132					
					T3S	25,479	3	0	4	117	27,448	3	0	4	126	27,795	3	0	4	128					
					T3M	26,245	3	0	4	121	28,273	3	0	4	130	28,631	3	0	4	132					
					T4M	25,675	3	0	4	118	27,659	3	0	4	127	28,009	3	0	4	129					
					TFTM	26,229	3	0	4	121	28,255	3	0	4	130	28,613	3	0	4	132					
					TSVS	27,279	5	0	1	126	29,387	5	0	1	135	29,759	5	0	1	137					
					TSS	27,301	4	0	2	126	29,410	5	0	2	136	29,783	5	0	2	137					
					TSM	27,232	5	0	3	125	29,336	5	0	3	135	29,707	5	0	3	137					
					TSW	27,053	5	0	4	125	29,144	5	0	4	134	29,513	5	0	4	136					
					BLC	21,504	2	0	3	99	23,166	2	0	3	107	23,459	2	0	4	108					
	80	1050	P4	270W	LCCO	16,001	2	0	4	74	17,238	2	0	4	79	17,456	2	0	4	80					
					RCCO	16,001	2	0	4	74	17,238	2	0	4	79	17,456	2	0	4	80					
					T1S	30,963	4	0	4	115	33,355	4	0	4	124	33,777	4	0	4	125	18,125	2	0	2	64
					T2S	30,930	4	0	4	115	33,320	4	0	4	123	33,742	4	0	4	125	17,791	3	0	3	63
					T2M	31,089	3	0	4	115	33,491	3	0	4	124	33,915	3	0	4	126	17,821	3	0	3	63
					T3S	30,108	4	0	4	112	32,435	4	0	5	120	32,845	4	0	5	122	17,782	2	0	2	63
					T3M	31,014	3	0	4	115	33,410	3	0	4	124	33,833	3	0	4	125	17,817	3	0	3	63
					T4M	30,340	3	0	5	112	32,684	3	0	5	121	33,098	3	0	5	123	17,779	2	0	3	63
					TFTM	30,995	3	0	5	115	33,390	3	0	5	124	33,812	3	0	5	125	18,107	2	0	3	64
					TSVS	32,235	5	0	1	119	34,726	5	0	1	129	35,166	5	0	1	130	18,794	3	0	1	67
	80	1050	P4	270W	TSS	32,261	5	0	2	119	34,754	5	0	2	129	35,194	5	0	2	130	18,805	3	0	1	67
					TSM	32,180	5	0	4	119	34,667	5	0	4	128	35,105	5	0	4	130	18,705	4	0	2	66
					TSW	31,969	5	0	4	118	34,439	5	0	5	128	34,875	5	0	5	129	18,740	4	0	2	66
					BLC	25,412	2	0	4	94	27,376	2	0	4	101	27,722	2	0	4	103					
					LCCO	18,909	2	0	4	70	20,370	2	0	4	75	20,628	2	0	4	76					
						18,909	2	0	4	70	20,370	2	0	4	75	20,628	2	0	4	76					



12, 18 and 26 Watt SLIM wallpacks are ultra efficient and deliver impressive light distribution with a compact low-profile design that's super easy to install as a downlight or uplight.

Color: Bronze

Weight: 4.5 lbs

Project:

Type: **TYPE S3**

Prepared By:

Date:

#### Driver Info

Type:	Constant Current
120V:	0.12A
208V:	0.08A
240V:	0.07A
277V:	0.06A
<b>Input Watts:</b>	<b>16W</b>
Efficiency:	76%

#### LED Info

Watts:	12W
Color Temp:	4000K
Color Accuracy:	72 CRI
L70 Lifespan:	100000
Lumens:	1982
Efficacy:	125 LPW

## Technical Specifications

### Listings

#### UL Listing:

Suitable for wet locations. Suitable for mounting within 1.2m (4ft) of the ground.

#### DLC Listed:

This product is listed by Design Lights Consortium (DLC) as an ultra-efficient premium product that qualifies for the highest tier of rebates from DLC Member Utilities.

DLC Product Code: PGJBD3AQ

#### ADA Compliant:

SLIM™ is ADA Compliant.

#### Dark Sky Approved:

The International Dark Sky Association has approved this product as a full cutoff, fully shielded luminaire.

#### IESNA LM-79 & LM-80 Testing:

RAB LED luminaires have been tested by an independent laboratory in accordance with IESNA LM-79 and LM-80, and have received the Department of Energy "Lighting Facts" label.

### Construction

#### IP Rating:

Ingress Protection rating of IP66 for dust and water

#### Cold Weather Starting:

Minimum starting temperature is -40°C (-40°F)

#### Maximum Ambient Temperature:

Suitable for use in 40°C (104°F) ambient temperatures

#### Housing:

Precision die-cast aluminum housing.

#### Mounting:

Heavy-duty mounting bracket with hinged housing for easy installation.

#### Recommended Mounting Height:

Up to 8 ft.

#### Lens:

Tempered glass lens.

#### Reflector:

Specular thermoplastic.

#### Gaskets:

High-temperature silicone

#### Finish:

Formulated for high-durability and long lasting color.

#### Green Technology:

Mercury and UV free. RoHS compliant components. Polyester powder coat finish formulated without the use of VOC or toxic heavy metals.

### LED Characteristics

#### LED:

Multi-chip, long-life LED.

#### Lifespan:

100,000-hour LED lifespan based on IES LM-80 results and TM-21 calculations.

#### Color Consistency:

3-step MacAdam Ellipse binning to achieve consistent fixture-to-fixture color.

#### Color Stability:

LED color temperature is warrantied to shift no more than 200K in CCT over a 5 year period.

#### Color Uniformity:

RAB's range of CCT (Correlated Color Temperature) follows the guidelines for the American National Standard for Specifications for the Chromaticity of Solid State Lighting (SSL) Products, ANSI C78.377-2015.

#### HID Replacement Range:

Replaces 70W Metal Halide.

### Electrical

#### Driver:

Constant Current, Class 2, 100-277V, 50/60 Hz., 4KV surge protection, 350mA, 100-240VAC 0.3-0.15 Amps, 277VAC 0.15Amps, Power Factor 99%.

### Other

#### California Title 24:

SLIM12 complies with 2013 California Title 24 building and electrical codes as a residential outdoor fixture. See SLIM12/PC for a model that complies as a commercial outdoor non-pole-mounted fixture  $\leq$  30 Watts.

#### Patents:

The design of the SLIM™ is protected by patents in U.S. Pat D681,864, and pending patents in Canada, China, Taiwan and Mexico.

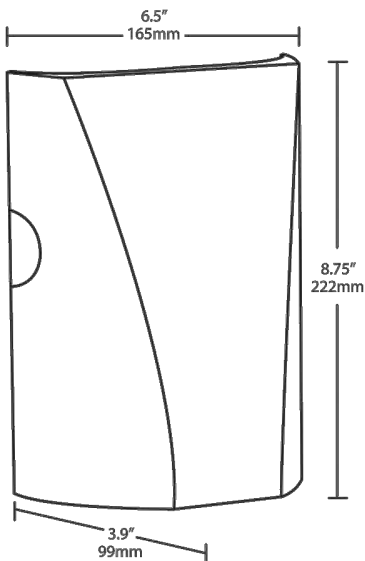
#### Buy American Act Compliance:

RAB values USA manufacturing! Upon request, RAB may be able to manufacture this product to be compliant with the Buy American Act (BAA). Please contact customer service to request a quote for the product to be made BAA compliant.

Technical Specifications (continued)

Optical	BUG Rating:
BUG Rating:	B1 U0 G0
B1 U0 G0	

Dimensions



Features

- Full cutoff, fully shielded LED wallpack
- Can be used as a downlight or uplight
- Contractor friendly features for easy installation
- 100,000-hour LED Life
- 5-Year Warranty

Ordering Matrix

Family	Watts	Color Temp	Finish	Driver	Options
SLIM	12	N			
	26 = 26W	Blank = 5000K (Cool)	Blank = Bronze	Blank = Standard (120-277V)	Blank = No Option
	18 = 18W	N = 4000K (Neutral)	W = White	/D10 = Dimmable	/PC = 120V Button
	12 = 12W	Y = 3000K (Warm)			/PC2 = 277V Button
					/PCT = 120-277V Twistlock



Gotham Architectural Downlighting  
LED Downlights

**6" Evo®**  
Cylinder

Solid-State Lighting



FEATURES

**OPTICAL SYSTEM**

- Self-flanged semi-specular, matte-diffuse or finishing trim
- Patented Bounding Ray™ optical design (U.S. Patent No. 5,800,050)
- 45° cutoff to source and source image
- Top-down flash characteristic
- Polycarbonate lens integral to light engine

**MECHANICAL SYSTEM**

- Heavy-gauge aluminum construction
- Ceiling mount and wall mount for direct installation to 4" octagonal or square junction box
- Pendant mount entry for 3/8" National Pipe Thread stem; wires supplied by others
- Unique mounting mechanism at top of cylinders for easy one-person installation
- EDXB driver includes 3-foot DMX signal cable when ordered with FCM or WM mounting option. Fixture includes 10-foot DMX signal cable when ordered with PM or ACC mounting option.
- ACC180 provided with 15' 5-wire cord for power and 0-10V dimming

**ELECTRICAL SYSTEM**

- Fully serviceable and upgradeable LED light engine
- 70% lumen maintenance at 60,000 hours
- Tested according LM-79 and LM-80 standards
- 2.5 SDCM; 85 CRI typical, 90+ CRI optional
- Overload and short circuit protected
- Dimming wires supplied by others

**LISTINGS**

- Fixtures are CSA certified to meet US and Canadian standards; wet location, covered ceiling. ENERGY STAR® certified product.

**WARRANTY**

- 5-year limited warranty. Complete warranty terms located at:  
[www.acuitybrands.com/CustomerResources/Terms\\_and\\_conditions.aspx](http://www.acuitybrands.com/CustomerResources/Terms_and_conditions.aspx)

Note: Actual performance may differ as a result of end user environment and application. All values are design or typical values, measured under laboratory conditions at 25° C.

ORDERING INFORMATION



A+ Capable options indicated  
by this color background.

EXAMPLE: EVO CYL 35/10 6AR MWD LSS MVOLT EZ1 FCM DWHG

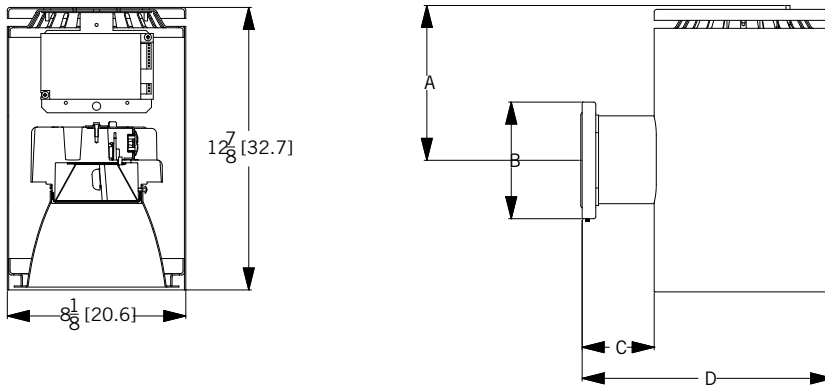
Series	Type	Color temperature	Nominal lumen values	Aperture/Trim color	Trim type	Distribution <sup>2</sup>	Finish
<b>EVO</b>	<b>CYL</b>	27/ 2700 K	10 1000 lumens 35 3500 lumens	<b>6AR</b> Clear	(blank) Downlight	<b>VND</b> Very narrow (0.5 s/mh)	<b>LSS</b> Semi-specular
		30/ 3000 K	15 1500 lumens 40 4000 lumens	6PR Pewter	W Wallwash	ND Narrow (0.7 s/mh)	LD Matte-diffuse
		35/ 3500 K	20 2000 lumens 45 4500 lumens	6WTR Wheat		MD Medium (0.9 s/mh)	
		<b>40/ 4000 K</b>	<b>25 2500 lumens</b>	6GR Gold		<b>MWD</b> Medium wide (1.0 s/mh)	<b>LS</b> Specular
		50/ 5000 K	30 3000 lumens	6WR <sup>1</sup> White		<b>WD</b> Wide (1.2 s/mh)	
				6BR <sup>1</sup> Black			
				6WRAMF <sup>1</sup> White anti-microbial			

Voltage	Driver <sup>3</sup>	Mounting	Options
<b>MVOLT</b>	<b>EZ10</b> eldoLED 0-10V ECOdrive. Linear dimming to 10% min.	<b>FCM</b> Ceiling mount	<b>SF<sup>9</sup></b> Single fuse
120	<b>EZ1</b> eldoLED 0-10V ECOdrive. Linear dimming to 1% min.	<b>WM<sup>7</sup></b> Wall mount	<b>CR190</b> High CRI (90+)
277	<b>EZB</b> eldoLED 0-10V SOLOdrive. Logarithmic dimming to <1%.	<b>PM</b> Pendant 3/8" thread mount	<b>NPS80EZ<sup>6,10</sup></b> Sensor Switch®
	<b>EDAB</b> eldoLED SOLOdrive DALI. Logarithmic dimming to <1%.	<b>ACC<sup>8</sup></b> 10ft aircraft cable and cord mount	nLight® dimming pack controls 0-10V eldoLED drivers.
	<b>EDXB</b> eldoLED POWERdrive DMX with RDM (remote device management). Square Law dimming to <1%. Includes termination resistor. Refer to <a href="#">DMXR Manual</a> .	<b>ACC180<sup>8</sup></b> 15ft aircraft cable and cord mount	<b>NPS80EZER<sup>6,10,11</sup></b> Sensor Switch®
	<b>EXA1<sup>4</sup></b> XPoint Wireless, eldoLED 0-10V ECOdrive. Linear dimming to 1%. Refer to XPoint tech sheet.		nLight® dimming pack controls 0-10V eldoLED drivers. ER controls fixtures on emergency circuit operation.
	<b>EXAB<sup>4</sup></b> XPoint Wireless, eldoLED 0-10V SOLOdrive. Logarithmic dimming to <1%. Refer to XPoint tech sheet.		
	<b>ECOS2<sup>5,6</sup></b> Lutron® Hi-Lume® 2-wire forward-phase driver. Minimum dimming level 1%. Minimum lumen 1000/ Maximum lumen 3000.		
	<b>ECOS3<sup>5</sup></b> Lutron® Hi-Lume® 3-wire or EcoSystem® dimming driver. Minimum dimming level 1%. Minimum lumen 1000/Maximum lumen 4500.		

Architectural Colors - Powder Paint <sup>12</sup>
<b>DWHG</b> Matte white (standard)
<b>DDB</b> Dark bronze
<b>DBL</b> Black
<b>DWH</b> Gloss white
<b>DDB</b> Medium bronze
<b>DNA</b> Natural aluminum
<b>DSS</b> Sandstone
<b>DGC</b> Charcoal grey
<b>DTG</b> Tennis green
<b>DBR</b> Bright red
<b>DSB</b> Steel blue

DIMENSIONAL DATA

All dimensions are inches (centimeters) unless otherwise noted.



Reflector aperture: 6-1/4 (15.9)  
Housing diameter: 8-1/8 (20.3)

Wall mount dimensions  
A = 7-3/4 (19.7)  
B = 5-5/16 (13.5)  
C = 3-1/4 (8.3)  
D = 10-7/8 (27.6)

ELECTRICAL

WATTAGE CONSUMPTION MATRIX			
LUMENS	LM ACTUAL	WATTAGE	LUMENS per WATT
1000	1,059	11.8	90.1
1500	1,572	18.5	85.0
2000	2,058	23.2	88.9
2500	2,612	29.5	88.5
3000	3,077	36.6	84.1
3500	3,591	42.1	85.3
4000	4,046	48.1	84.2
4500	4,555	46.9	97.1

ACCESSORIES

ACCESSORIES order as separate catalog numbers (shipped separately)

<b>CYS</b> <sup>13</sup>	3/8" stem and canopy with 5° "hang straight" swivel	<b>CRSX</b> <sup>13</sup>	3/8" stem and canopy with 45° swivel. Use this nomenclature when ordering EDXB driver
<b>CRS</b> <sup>13</sup>	3/8" stem and canopy with 45° swivel	<b>SDT 347/120 75VA</b> <sup>14</sup>	347V Step-down transformer
<b>CYSX</b> <sup>13</sup>	3/8" stem and canopy with 5° "hang straight" swivel. Use this nomenclature when ordering EDXB driver		

NOTES

ORDERING NOTES

- Not available with finishes.
- Not available with wallwash trim type.
- Refer to [TECH-240](#) for compatible dimmers.
- XPoint® CMRB ships separately.
- Not available with nLight® and XPoint options.
- Specify voltage. ECOS2 not available in 277V
- Access panel (supplied by others) recommended for use with nLight® and XPoint®.
- White cord with white housings. All others black cord.
- 120V or 277V only.
- Interface remote mounted.
- For use with generator supply EM power. Will require an emergency hot feed and normal hot feed.
- Additional architectural colors available; see [www.lithonia.com/archcolors](http://www.lithonia.com/archcolors).
- Color and length of stem must be specified (from 6" to 240" in even increments in maximum sections of 48"). Ex.: CYS06 DWHG. Ceiling attachment for interior use. Consult factory for exterior use. Wire not included.
- Transformer must be field-installed to an accessible remote-mounted junction box.



### Distribution Curve

## Distribution Data

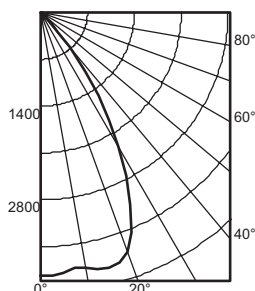
### Output Data

## Coefficient of Utilization

Illuminance: Single Luminaire 30" Above Floor

**EVO 35/40 6AR LS**

INPUT WATTS: 48.1, DELIVERED LUMENS: 4046, LM/W=84.1 , 1.03 S/MH, TEST NO. LTL27768

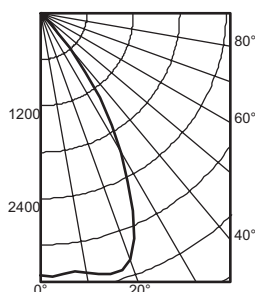


					pf	20%								
					pc	80%			70%			50%		
Ave	Lumens	Zone	Lumens	% Lamp	pw	50%	30%	10%	50%	30%	10%	50%	30%	10%
0	3935	0° - 30°	2904.3	71.8	0	119	119	119	116	116	116	111	111	111
5	3901	0° - 40°	3830.0	94.7	1	111	108	106	109	106	104	105	103	101
15	3944	0° - 60°	4043.4	99.9	2	103	99	96	101	98	95	98	95	93
25	3172	0° - 90°	4046.3	100.0	3	96	91	87	95	90	87	92	88	85
35	1508	90° - 180°	0.0	0.0	4	90	84	80	89	84	80	87	82	79
45	221	0° - 180°	4046.3	*100.0	5	84	78	74	83	78	74	81	77	73
55	6	10	*Efficiency		6	79	73	69	78	73	68	77	72	68
65	2	2			7	74	68	64	73	68	64	72	67	63
75	1	1			8	70	64	60	69	63	60	68	63	59
85	0	0			9	66	60	56	65	60	56	64	59	56
90	0				10	62	56	52	62	56	52	61	56	52

Mounting Height	Initial FC Beam	50% beam - 54.4°		10% beam - 78.1°	
		Diameter	FC	Diameter	FC
8.0	130.1	5.7	65.1	8.9	13.0
10.0	70.0	7.7	35.0	12.2	7.0
12.0	43.6	9.8	21.8	15.4	4.4
14.0	29.8	11.8	14.9	18.7	3.0
16.0	21.6	13.9	10.8	21.9	2.2

## EVO 35/35 6AR LS

INPUT WATTS: 42.1. DELIVERED LUMENS: 3591. LM/W=85.3. 1.05 S/MH. TEST NO. LTL27767

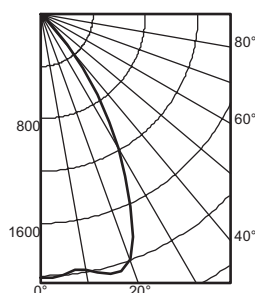


					pf pc pw	20%									
		Zone	Lumens	% Lamp		80%			70%			50%			
Ave	Lumens					50%	30%	10%	50%	30%	10%	50%	30%	10%	
0	3400		0° - 30°	2579.3	71.8	0	119	119	119	116	116	116	111	111	111
5	3390	324	0° - 40°	3399.8	94.7	1	111	108	106	109	106	104	105	103	101
15	3497	981	0° - 60°	3586.3	99.9	2	103	99	96	101	98	95	98	95	93
25	2830	1274	0° - 90°	3590.5	100.0	3	96	91	87	95	90	87	92	88	85
35	1335	820	90° - 180°	0.0	0.0	4	90	84	80	89	84	80	87	82	79
45	193	177	0° - 180°	*3590.5	*100.0	5	84	78	74	83	78	74	81	77	73
55	5	9	*Efficiency				6	79	73	69	78	72	68	77	72
65	2	2					7	74	68	64	73	68	64	72	67
75	1	1					8	70	64	60	69	63	59	68	63
85	1	1					9	66	60	56	65	60	56	64	59
90	1						10	62	56	52	62	56	52	61	56

Mounting Height	50% beam - 55.2°			10% beam - 78.2°	
	Beam	Diameter	FC	Diameter	FC
8.0	112.4	5.7	56.2	8.9	11.2
10.0	60.4	7.8	30.2	12.2	6.0
12.0	37.7	9.9	18.8	15.4	3.8
14.0	25.7	12.0	12.9	18.7	2.6
16.0	18.7	14.1	9.3	21.9	1.9

**EVO 35/20 6AR LS**

INPUT WATTS: 23.2, DELIVERED LUMENS: 2058, LM/W=88.7, 1.02 S/MH, TEST NO. LTL27777



						pf	20%						50%					
						pc	80%			70%								
Ave	Lumens	Zone	Lumens	% Lamp		pw	50%	30%	10%	50%	30%	10%	50%	30%	10%	50%	30%	10%
0	2018	0° - 30°	1498.5	72.8		0	119	119	119	116	116	116	111	111	111			
5	1997	190	0° - 40°	1958.0	95.1	1	111	108	106	109	107	105	105	103	101			
15	2053	576	0° - 60°	2056.6	99.9	2	103	99	96	102	98	95	98	95	93			
25	1618	733	0° - 90°	2058.3	100.0	3	96	92	88	95	91	87	92	89	86			
35	749	459	90° - 180°	0.0	0.0	4	90	85	81	89	84	80	87	83	79			
45	105	94	0° - 180°	2058.3	*100.0	5	84	79	74	83	78	74	82	77	73			
55	3	5	*Efficiency			6	79	73	69	78	73	69	77	72	68			
65	1	1				7	74	68	64	74	68	64	72	67	64			
75	0	0				8	70	64	60	69	64	60	68	63	60			
85	0	0				9	66	60	56	66	60	56	65	60	56			
90	0					10	62	57	53	62	56	53	61	56	53			

Initial FC		50% beam - 54.2°		10% beam - 77.3°	
Mounting Height	Center Beam	Diameter	FC	Diameter	FC
8.0	66.7	5.6	33.4	8.8	6.7
10.0	35.9	7.7	17.9	12.0	3.6
12.0	22.4	9.7	11.2	15.2	2.2
14.0	15.3	11.8	7.6	18.4	1.5
16.0	11.1	13.8	5.5	21.6	1.1

LUMEN OUTPUT MULTIPLIER - CRI	
CRI	FACTOR
80 CRI	1
90 CRI	0.79

LUMEN OUTPUT MULTIPLIER - CCT	
CRI	FACTOR
5000 K	1.101
4000 K	1.035
3500 K	1
3000 K	0.973
2700 K	0.938

LUMEN OUTPUT MULTIPLIER - TRIM FINISH						
FINISH	CLEAR (AR)	PEWTER (PR)	WHEAT (WTR)	GOLD (GR)	WHITE (WR/WRAMF)	BLACK (BR)
Specular (LS)	1.00	0.88	0.83	0.95	N/A	N/A
Semi-specular (LSS)	0.95	0.84	0.79	0.90	N/A	N/A
Matte-diffuse (LD)	0.85	0.73	0.69	0.80	N/A	N/A
Paint	N/A	N/A	N/A	N/A	0.87	0.73

## PHOTOMETRY NOTES

- Tested in accordance with IESNA LM-79-08.
- Tested to current IES and NEMA standards under stabilized laboratory conditions.
- CRI: 85 typical.

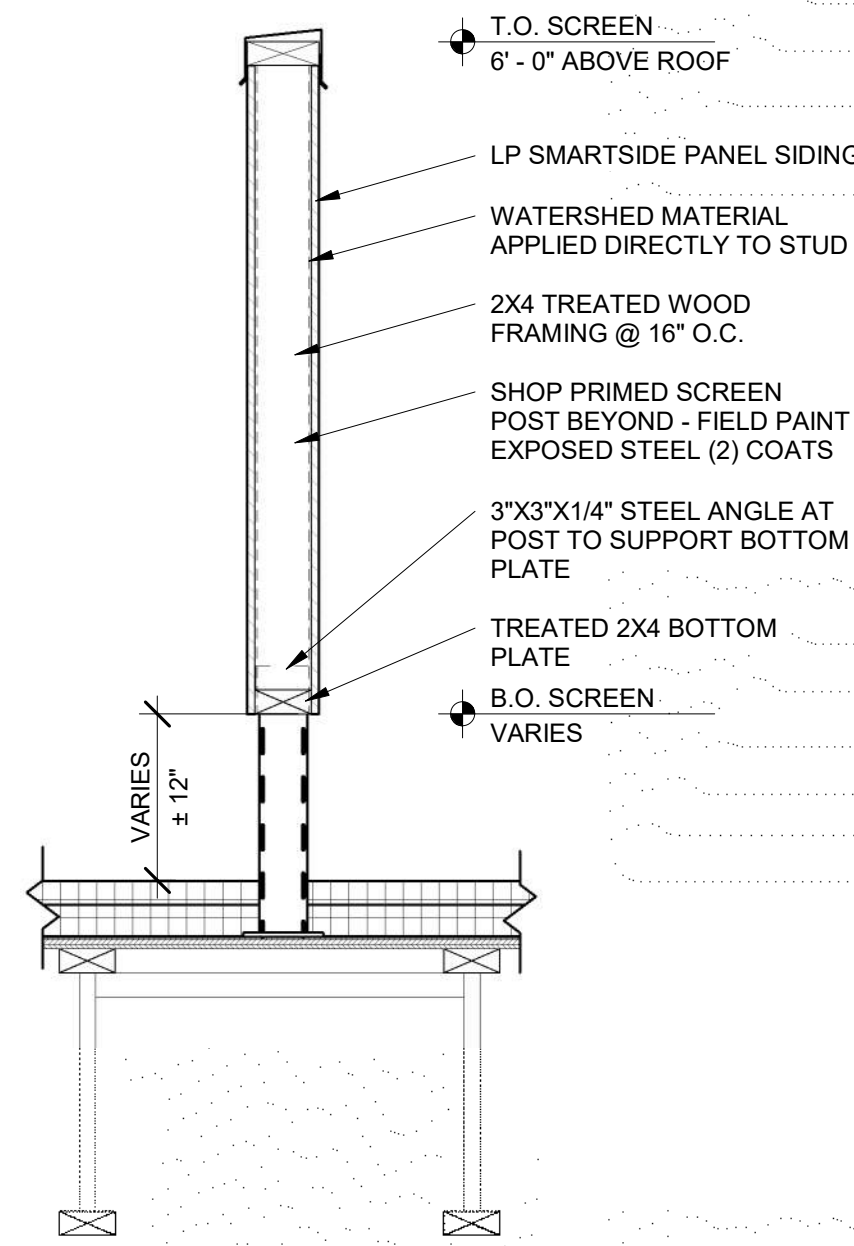
ISSUE DATES:		
Issue	Description	Date
SIP/ DES. REV.		11-28-17

This document contains confidential or proprietary information of Iconica. Neither the document nor the information herein is to be reproduced, distributed, used or disclosed, either in whole or in part, except as specifically authorized by Iconica.

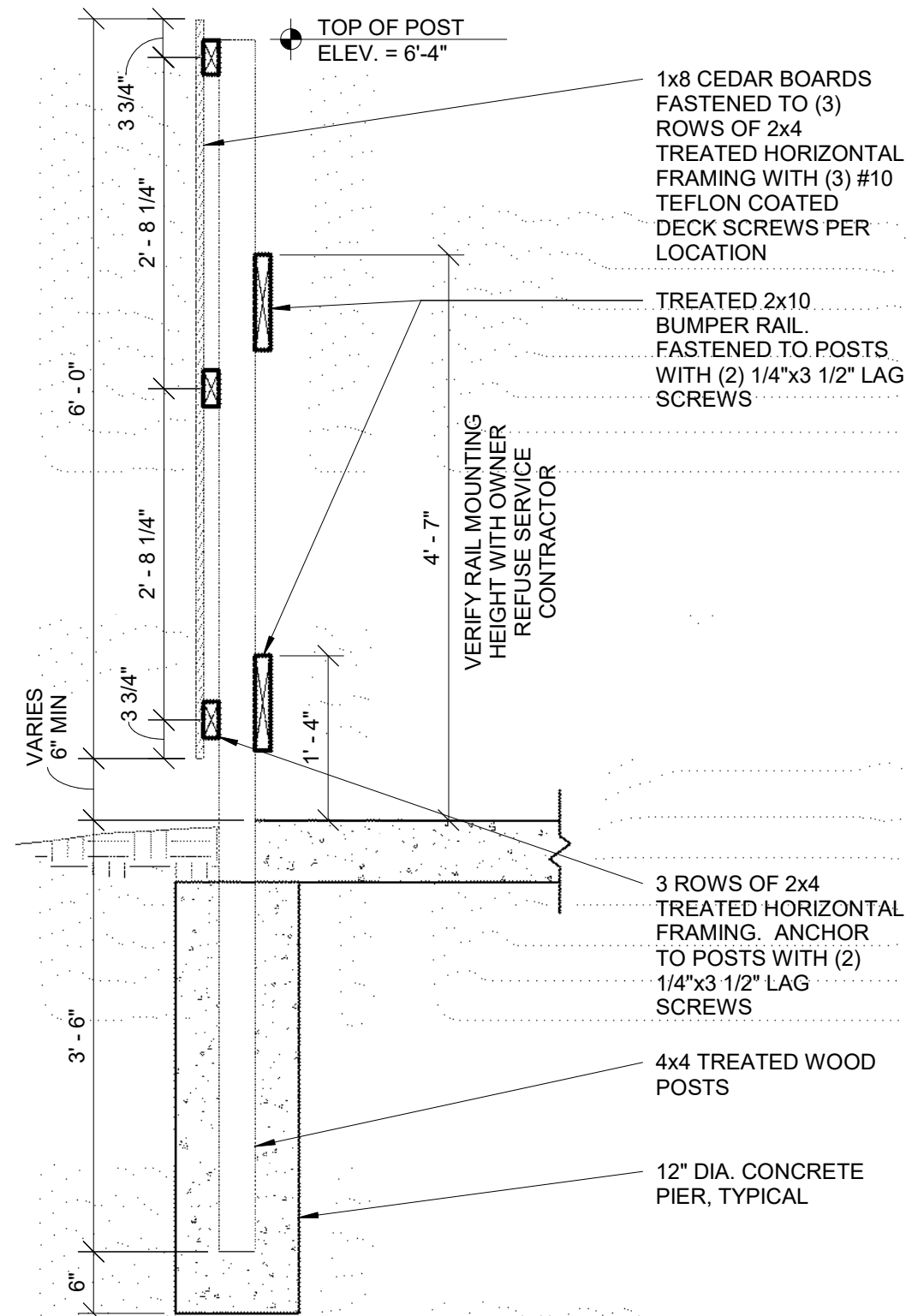
Sheet Title  
SITE PLAN DETAILS

Project Number: 20170680  
Sheet Number

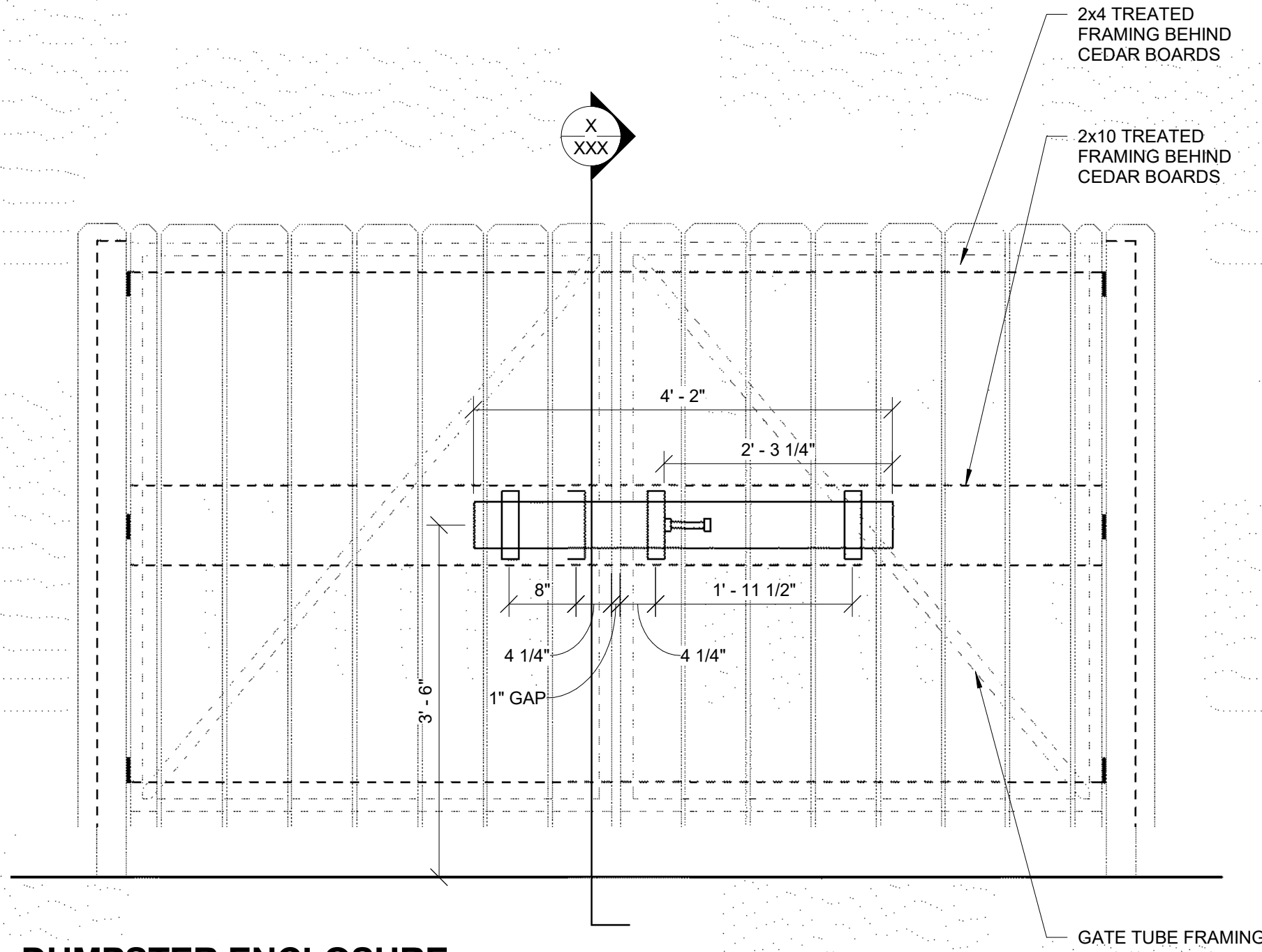
A101



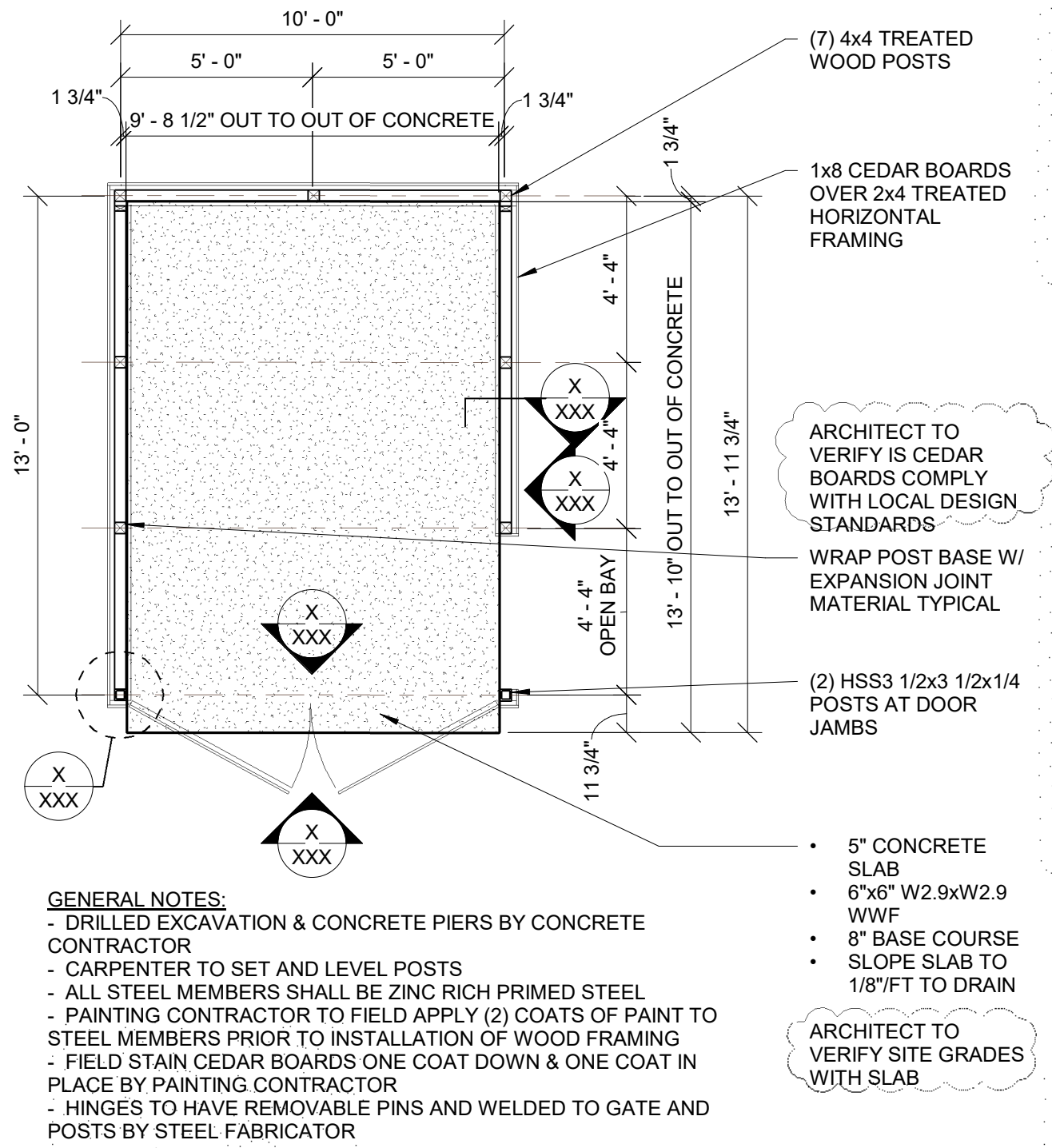
6 ROOF SCREEN SECTION  
A101 1" = 1'-0"



5 DUMPSTER ENCLOSURE SECTION  
A101 3/4" = 1'-0"

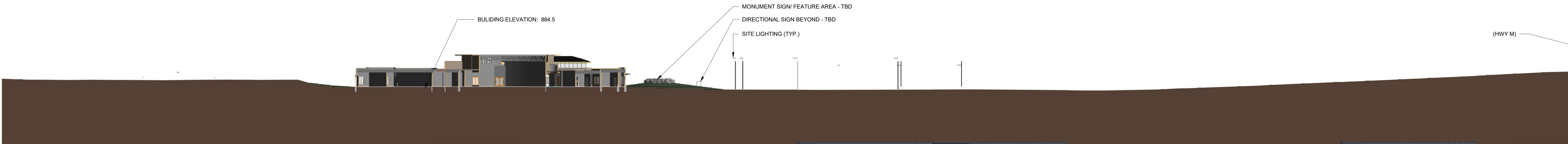


4 DUMPSTER ENCLOSURE ELEVATION  
A101 3/4" = 1'-0"

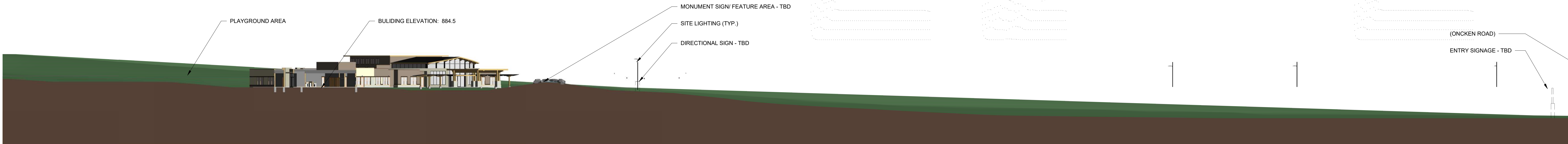


GENERAL NOTES:  
- DRILLED EXCAVATION & CONCRETE PIERS BY CONCRETE CONTRACTOR  
- CARPENTER TO SET AND LEVEL POSTS  
- ALL STEEL MEMBERS SHALL BE ZINC RICH PRIMED STEEL  
- PAINTING CONTRACTOR TO FIELD APPLY (2) COATS OF PAINT TO STEEL MEMBERS PRIOR TO INSTALLATION OF WOOD FRAMING  
- FIELD STAIN CEDAR BOARDS ONE COAT DOWN & ONE COAT IN PLACE BY PAINTING CONTRACTOR  
- HINGES TO HAVE REMOVABLE PINS AND WELDED TO GATE AND POSTS BY STEEL FABRICATOR

3 DUMPSTER ENCLOSURE PLAN  
A101 1/4" = 1'-0"

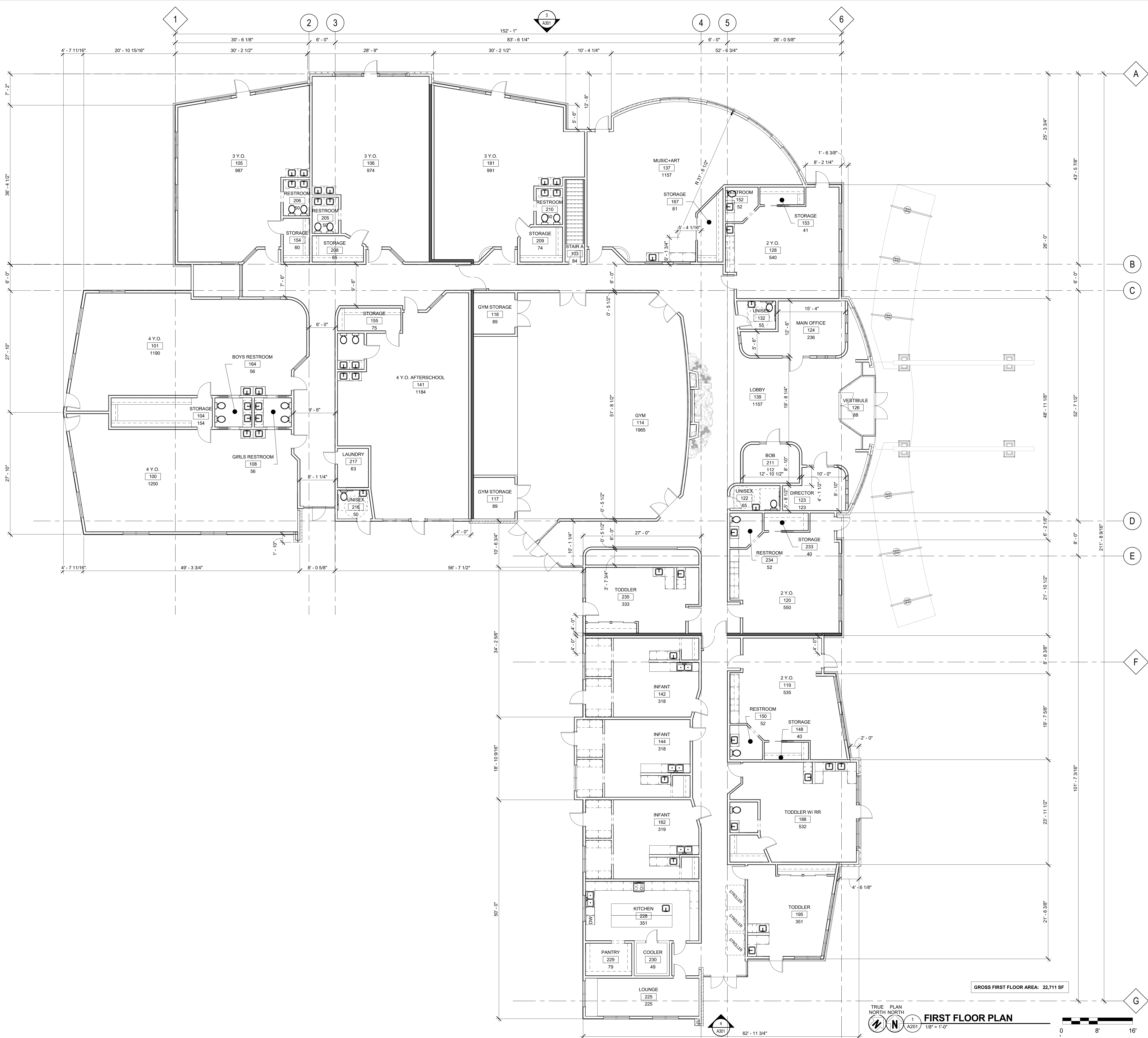
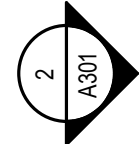


2 SITE SECTION - EAST/WEST  
A101 1" = 30'-0"



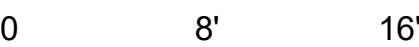
1 SITE SECTION - NORTH/SOUTH  
A101 1" = 30'-0"





GROSS FIRST FLOOR AREA: 22,711 SF

TRUE PLAN  
NORTH NORTH  
A201  
1/8" = 1'-0"  
FIRST FLOOR PLAN



ISSUE DATES:		
Issue	Description	Date
SIP/ DES. REV.		11-28-17

This document contains confidential or proprietary information of Iconica. Neither the document nor the information herein is to be reproduced, distributed, used or disclosed, either in whole or in part, except as specifically authorized by Iconica.

Sheet Title  
**FIRST FLOOR PLAN**

Project Number: 20170680  
Sheet Number

**A201**  
Copyright (C) 2017 by Iconica Inc. All Rights Reserved.  
11/28/2017 3:04:21 PM

## INSPIRE ECLC

5821 ONCKEN ROAD TOWN OF WESTPORT WI

BOB DAVIS

HANOVER TRAIL WAINAKEE WI

Issue	Description	Date
-------	-------------	------

This document contains confidential or proprietary information of Iconica. Neither the document nor the information herein is to be reproduced, distributed, used or disclosed, either in whole or in part, except as specifically authorized by Iconica.

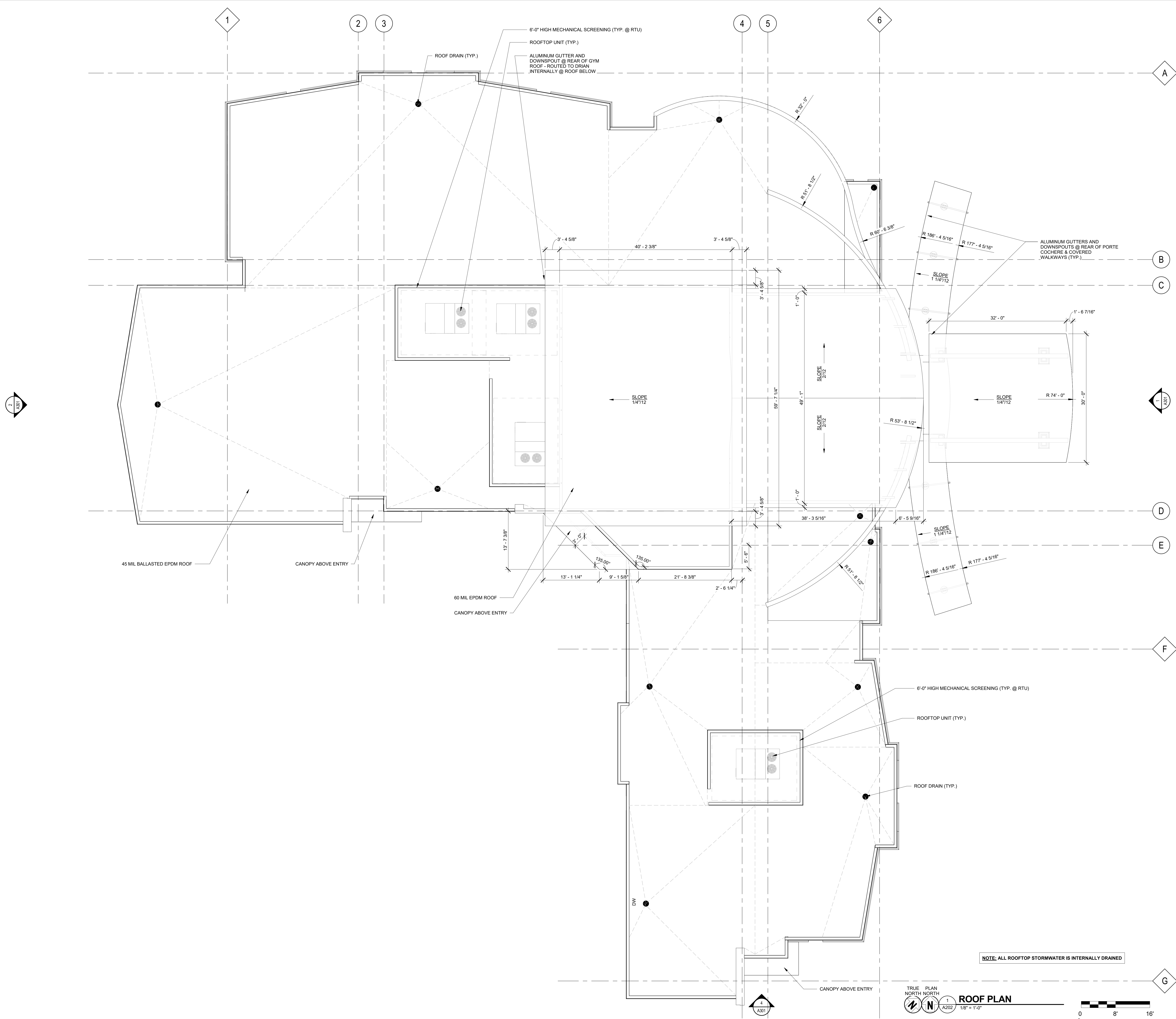
Sheet Title  
ROOF PLAN

Project Number: 20170680

Sheet Number

# A202

1/26/2017 2:03:27 PM

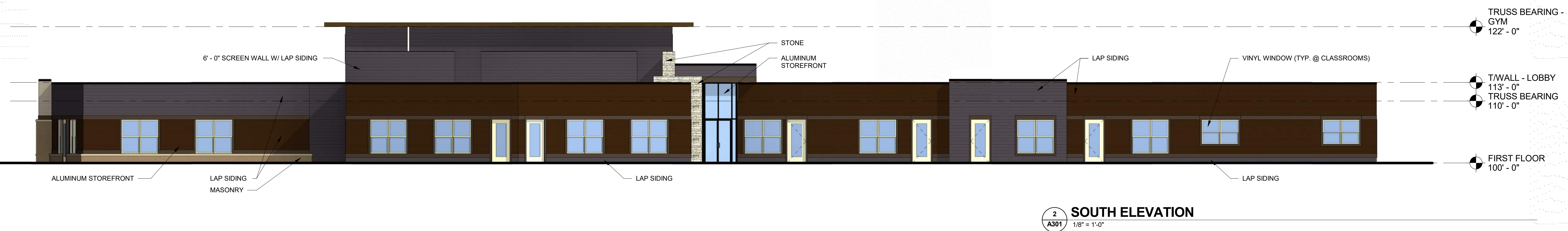
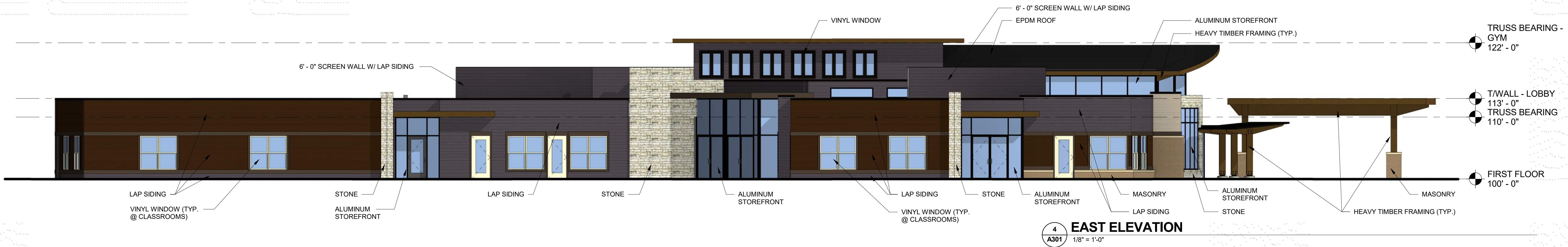






FRONT 3/4 - EYE LEVEL

EXTERIOR MATERIAL LEGEND					
SWATCH	MARK	DESCRIPTION	SWATCH	MARK	DESCRIPTION
	STONE	NATURAL STONE VENEER		TRIM	FINISH FOR ALL LP TRIM BOARD, METAL FLASHING, AND STOREFRONT MULLIONS
	MASONRY	8"x8"x16" SPLIT FACE BLOCK		LP - 1	LP LAP SIDING (5" EXPOSURE) COLOR: CHARCOAL
	PC SILL	4" HIGH PRECAST STONE SILL		LP - 2	LP LAP SIDING (5" EXPOSURE) COLOR: BROWN
	STAIN	WOOD STAIN @ ALL EXPOSED HEAVY TIMBER FRAMING AND FASCIA		LP - 3	LP LAP SIDING (5" EXPOSURE) COLOR: TAN

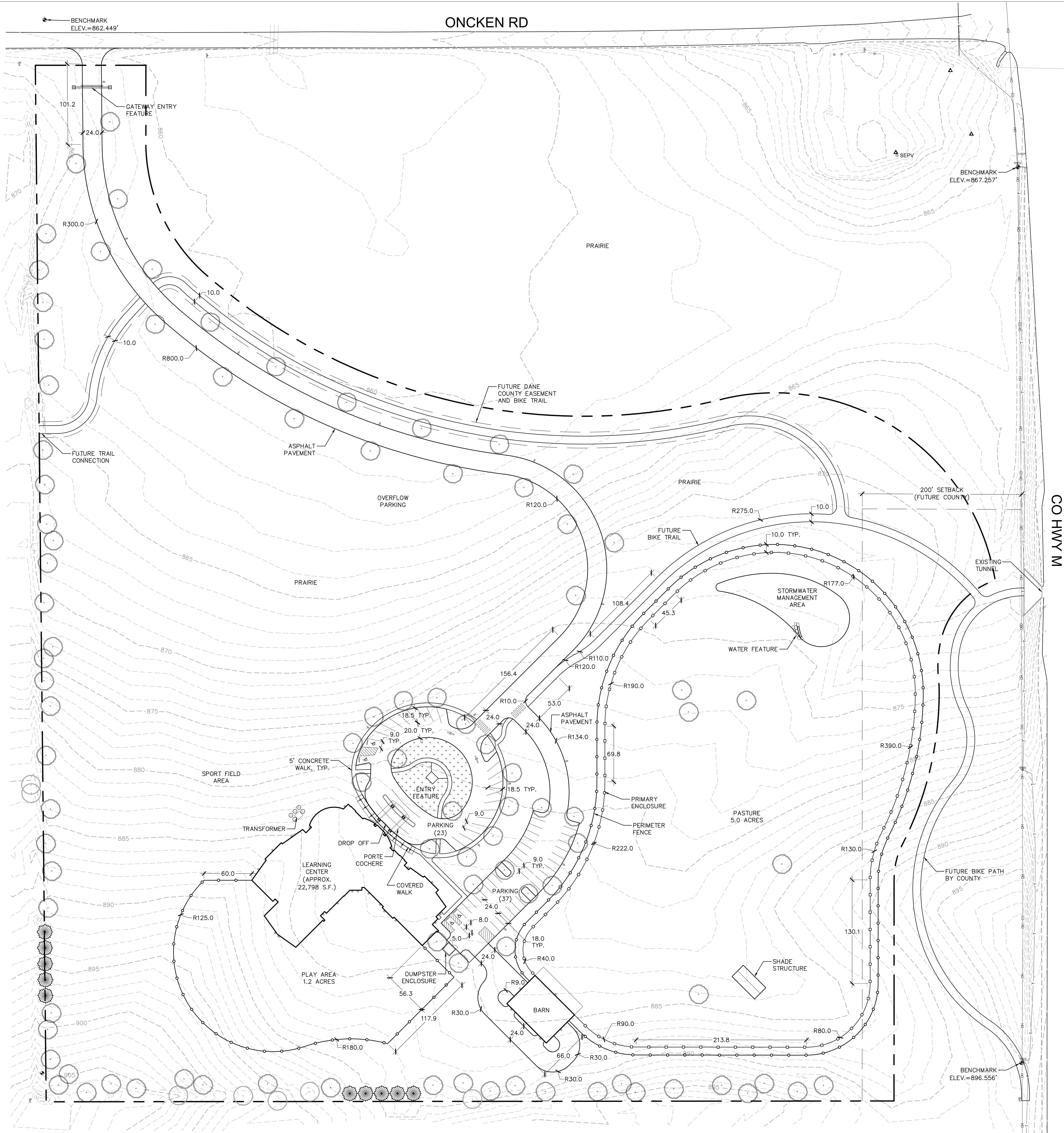






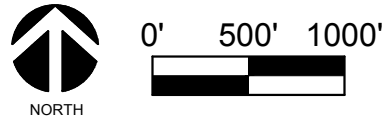


File: P:\27-1100\27-1117.00\_Westport\_Learning Center\CAD\P-SP.dwg Layout: C200 User: kotlins Plotted: Nov. 28, 2017 - 3:44pm



- LEGEND
- DEVELOPED LOT LINE
  - 6' PERIMETER FENCE
  - FENCE
  - FUTURE EASEMENT
  - PERENNIAL PLANTING
  - SHADE TREE

SITE LOCATION



**SITE STATISTICS**  
ZONING DISTRICT: ETZ  
ADDRESS: 5821 ONCKEN RD WAUNAKEE, WI

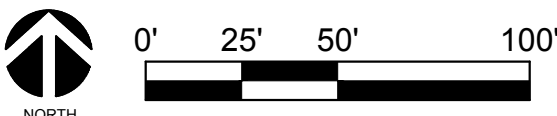
DEVELOPED LOT AREA: 1,062,833.2 SF (24.4 ACRES)  
IMPERVIOUS SURFACE (EXISTING): 0 SF  
IMPERVIOUS SURFACE (PROPOSED): 92,965 SF  
BUILDINGS (EXISTING): 0 SF  
BUILDINGS (PROPOSED): 25,198 SF  
PARKING & PAVEMENT (EXISTING): 0 SF  
PARKING & PAVEMENT (PROPOSED): 66,667 SF

**PARKING COUNT REQUIREMENT (DANE COUNTY)**  
REQUIRED: 1 STALL PER 6 CHILDREN (223 CHILDREN = 37 STALLS)  
PROVIDED: 60 STALLS  
MAX. EMPLOYEES AT ANY ONE TIME: 50

**MINIMUM CANOPY TREE AND PARKING SPACE REQUIREMENT**  
REQUIRED: 1 CANOPY TREE PER 12 PARKING STALLS = 6 TREES  
PROVIDED: 6 TREES

**PARKING LOT LANDSCAPING REQUIREMENT (CITY OF MIDDLETON)**  
\*IN ADDITION TO CANOPY TREE REQUIREMENT  
REQUIRED: 15 POINTS PER PARKING STALL  
60 STALLS = 900 POINTS  
PROVIDED: 900 POINTS (50 POINTS x 18 SHADE TREES)

**LANDSCAPE PLAN REQUIREMENT (TOWN OF WESTPORT)**  
REQUIRED: 1 SHADE TREE OR CONIFER PER 9,000 SF LOT AREA  
(1,062,833.2 SF LOT AREA = 118 TREES)  
PROVIDED: 118 TREES



**INSPIRE ECLC**

5821 ONCKEN ROAD, TOWN OF WESTPORT, WI

**BOB DAVIS**  
HANOVER TRAIL, WAUNAKEE, WI

ISSUE DATES:		
Issue	Description	Date

This document contains confidential or proprietary information of Iconica. Neither the document nor the information herein is to be reproduced, distributed, used or disclosed, either in whole or in part, except as specifically authorized by Iconica.

Sheet Title  
**SITE PLAN**

Project Number: 20170680  
Sheet Number

**C200**



File: P:\27-1100\27-1117.00\_Westport\_Learning\_Center\CAD\27-1117.dwg Layout: 2200 User: katriks Plotted: Nov 28, 2017 - 3:49pm



LEGEND

— — — — — DEVELOPED LOT LINE  
— o — o — o — 6' PERIMETER FENCE  
— o — o — o — FENCE  
— — — — — FUTURE EASEMENT  
[Pattern] PERENNIAL PLANTING  
[Circle] SHADE TREE

SPECIES LIST						
Symbol	Botanical Name	Common Name	Size	Root	Qty	Spacing
TREES						
AS	Acer saccharum	sugar maple	3"	B&B	na	
AG	Amelanchier x grandiflora	apple serviceberry	1.5"	B&B	na	
CA	Carya ovata	shagbark hickory	3"	B&B	na	
CE	Celtis occidentalis	hackberry	3"	B&B	na	
GD	Gymnocladus dioica	Kentucky coffeetree	3"	B&B	na	
PM	Picea mariana	black spruce	4'	B&B	na	
PT	Populus tremuloides	quaking aspen	1.5"	B&B	na	
QA	Quercus alba	white oak	3"	B&B	na	
QB	Quercus bicolor	swamp white oak	3"	B&B	na	
TA	Tilia americana	American linden	3"	B&B	na	
SHRUBS						
Ca	Ceanothus americanus	New Jersey tea	#3	Cont.		
Cs	cornus	Arnold Dwarf forsythia	#3	Cont.		
Hk	Hypericum kalmianum	St. John's wort	#3	Cont.		
Jc	Juniperus communis var. depressa	common juniper	#3	Cont.		
Ra	Rhus aromatica	fragrant sumac	#3	Cont.		
GRASSES/PERENNIALS						
ag	Andropogon gerardii	big bluestem	Qrt.	Cont.		
at	Asclepias tuberosa	butterfly weed	Qrt.	Cont.		
aa	Aster azureus	sky blue aster	Qrt.	Cont.		
ep	Echinacea palida	pale purple coneflower	Qrt.	Cont.		
gt	Geum triflorum	prairie smoke	Qrt.	Cont.		
hs	Helictotrichon sempervirens	blue oat grass	Qrt.	Cont.		
pa	Perovskia atriplicifolia	Russian sage	Qrt.	Cont.		
rh	Rudbeckia hirta	blackeyed susan	Qrt.	Cont.		
ss	Schizachyrium scoparium	little bluestem	Qrt.	Cont.		
sn	Sorghastrum nutans	Indiangrass	Qrt.	Cont.		
sh	Sporobolus heterolepis	prairie dropseed	Qrt.	Cont.		



**ICONICA**  
901 DEMING WAY // MADISON, WI 53717  
PH: 608.664.3300 // FX: 608.664.3535  
iconicacreates.com

**AYRES ASSOCIATES**  
5201 East Terrace Drive  
Suite 200  
Madison, WI 53718  
608.255.0800  
www.AyresAssociates.com

**INSPIRE ECLC**  
5821 ONCKEN ROAD, TOWN OF WESTPORT, WI

**BOB DAVIS**  
HANDOVER TRAIL, WAUNAKEE, WI

ISSUE DATES:

Issue	Description	Date
-------	-------------	------

This document contains confidential or proprietary information of Iconica. Neither the document nor the information herein is to be reproduced, distributed, used or disclosed, either in whole or in part, except as specifically authorized by Iconica.

Sheet Title  
**LANDSCAPE PLAN**

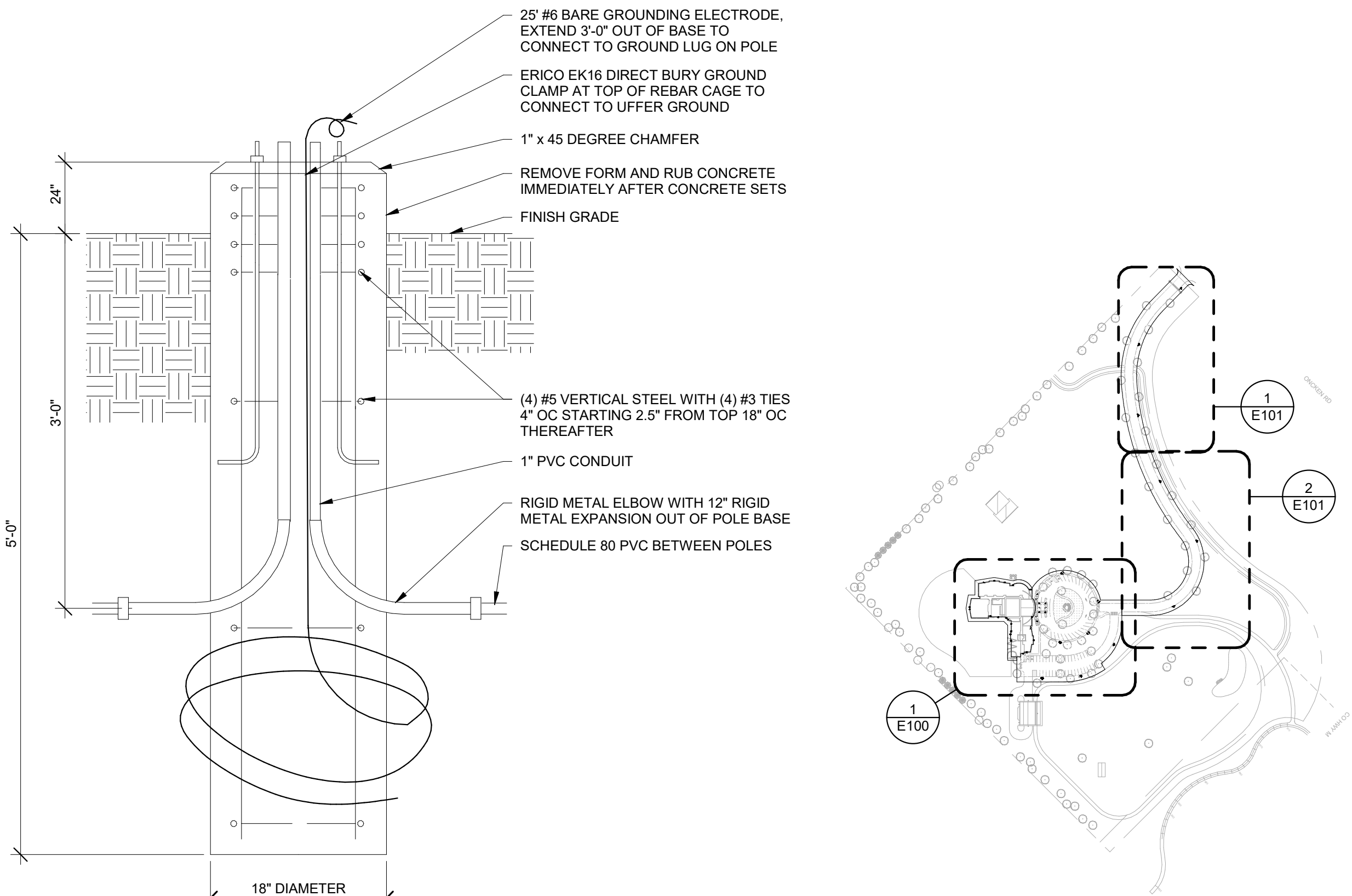
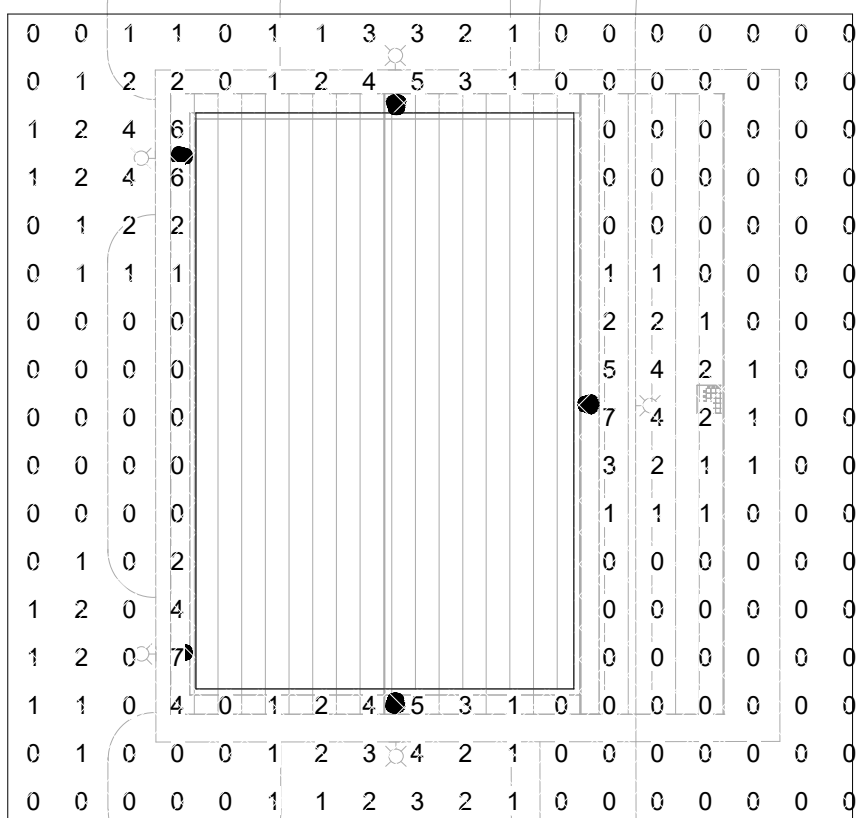
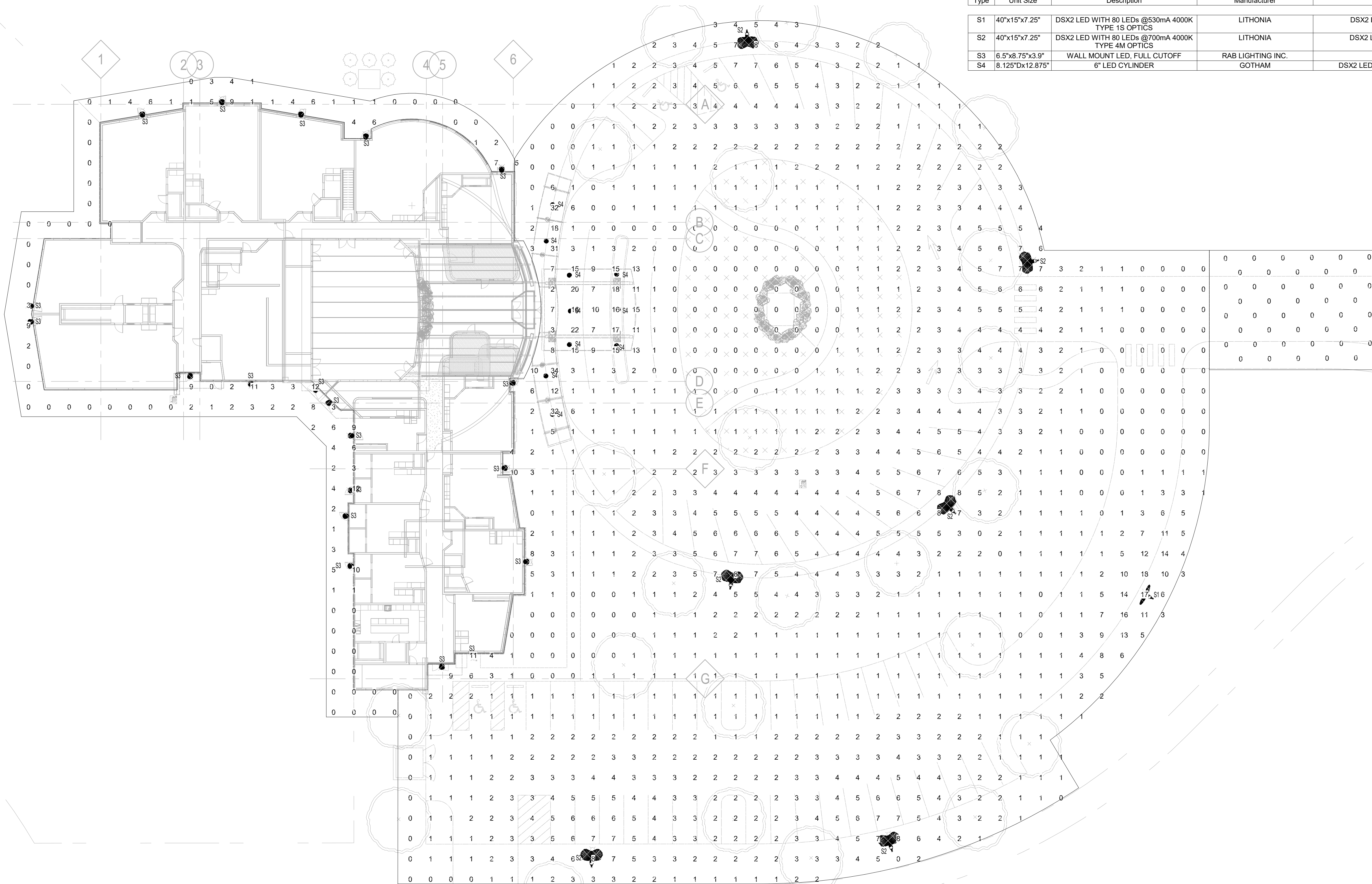
Project Number: 20170680  
Sheet Number  
**L100**

Copyright © 2017 by Iconica Inc. All Rights Reserved



ElumTools General Use Illuminance Results				
Calculation Points Name		Average	Maximum	Minimum
BuildingPerimeter		2 fc	12 fc	0 fc
ParkingLot		2 fc	34 fc	0 fc
Driveway		2 fc	19 fc	0 fc

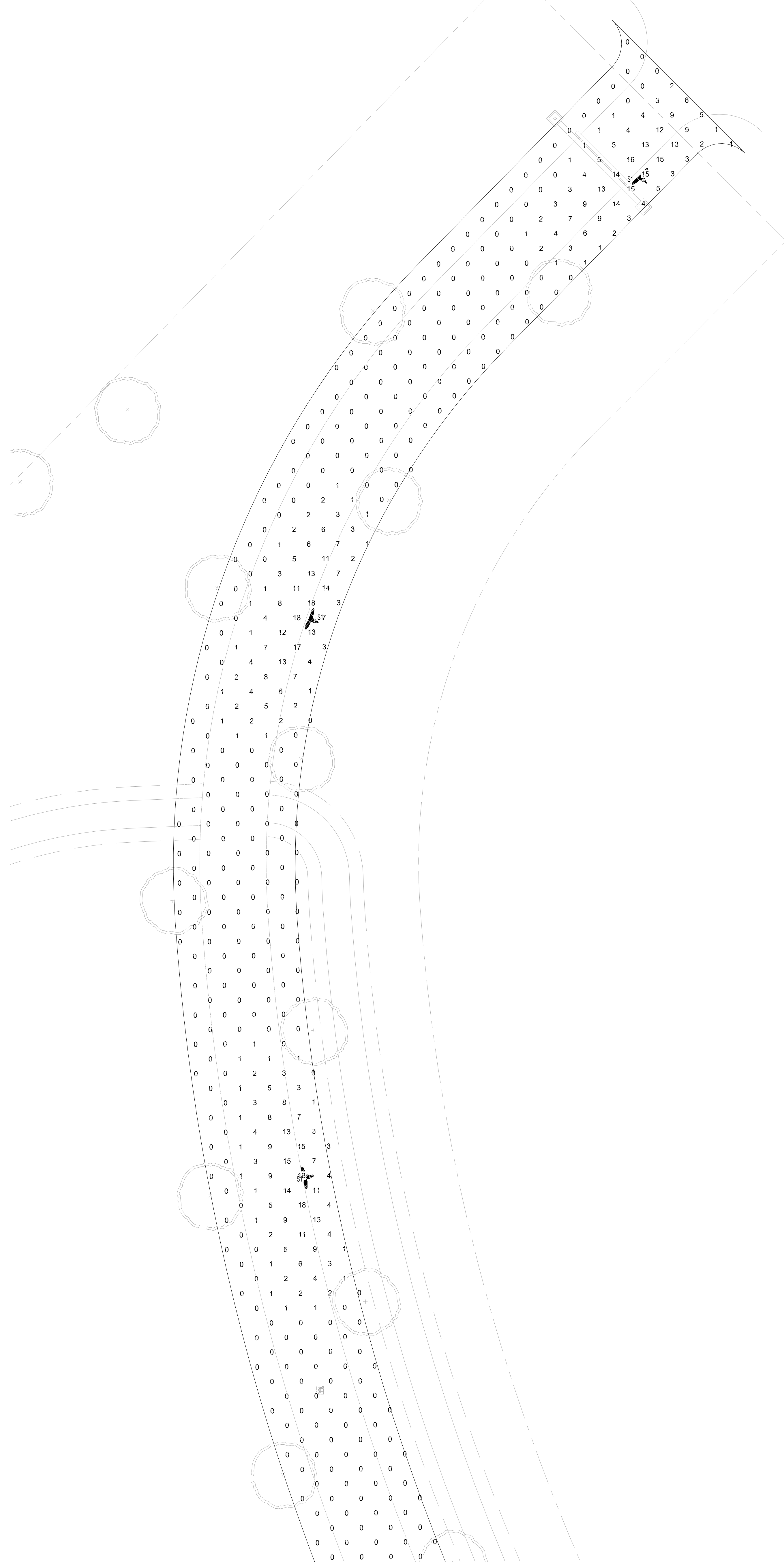
LIGHTING FIXTURE SCHEDULE									
Type	Unit Size	Description	Manufacturer	Model	Voltage	Wattage	Lamp	Mounting	Comments
S1	40"x15"x7.25"	DSX2 LED WITH 80 LEDs @530mA 4000K TYPE 1S OPTICS	LITHONIA	DSX2 LED P1 40K T1S MVOLT SPA DNAXD	208 V	140 W	LED, 18933L, 70 CRI, 4000K	15' SQ POLE	
S2	40"x15"x7.25"	DSX2 LED WITH 80 LEDs @700mA 4000K TYPE 4M OPTICS	LITHONIA	DSX2 LED P2 40K T4M MVOLT SPA DNAXD	208 V	185 W	LED, 23545L, 70 CRI, 4000K	20' SQ POLE	
S3	6.5"x8.75"x3.9"	WALL MOUNT LED, FULL CUTOFF	RAB LIGHTING INC.	SLIM12N	120 V	16 W	LED, 1372L 82 CRI, 4000K	WALL	
S4	8.125"Dx12.875"	6" LED CYLINDER	GOTHAM	DSX2 LED 100C 700 40K T2M MVOLT SPA DOBXD	120 V	30 W	LED, 2612L, 85 CRI, 4000K	CEILING	



PLAN NORTH  
1 SITE LIGHTING - BLDG  
1" = 20'-0"

3 POLE BASE DETAIL  
NTS

2 OVERALL SITE PLAN  
NTS



PLAN NORTH  
**1** SITE LIGHTING - DRIVE NORTH  
1" = 20'-0"



PLAN NORTH  
**2** SITE LIGHTING - DRIVE SOUTH  
1" = 20'-0"

ISSUE DATES:

Issue	Description	Date
-------	-------------	------

This document contains confidential or proprietary information of Iconica. Neither the document nor the information herein is to be reproduced, distributed, used or disclosed, either in whole or in part, except as specifically authorized by Iconica.

Sheet Title  
**ELECTRICAL SITE**

Project Number: 20170680  
Sheet Number

**E101**