



Volume 14, Revision 1



# DANE COUNTY CLEAN SWEEP

## HOUSEHOLD HAZARDOUS WASTE DISPOSAL GUIDELINES

### Facility & Location

Dane County Rodefild #2 Landfill  
7102 US Hwy 12/18, Madison WI 53718  
Located across from Yahara Hills Golf Course

### Hours of Operation

Tuesday - Friday: 7:00 - 2:45  
Saturday: 8:00 - 10:45  
Closed Sundays, Mondays and Holidays.

### User Fees

Dane County residents are required to pay a nominal \$10 trip fee to dispose of household hazardous wastes and electronics. Details inside.

### Electronics Collection

Get rid of your old CRT TV or CRT computer monitor for \$10.  
All other electronics accepted free of charge. Details inside.

### Open Year-Round

No more seasonal closures! Dane County Clean Sweep is available to residents and businesses on a year-round basis.

### Contact Information

Telephone: (608) 243-0368  
Clean Sweep Website: [www.danecountycleansweep.com](http://www.danecountycleansweep.com)  
Dane County Public Works Website:  
<http://www.countyofdane.com/pwht/recycling.aspx>



*"Dane County Clean Sweep is a program designed to lower the environmental risks associated with improper disposal of hazardous materials. For a nominal fee, residents of Dane County may use this program to safely dispose of unwanted paint, chemicals and other hazardous materials found in their homes. Businesses may also be eligible to participate under our Small Business VSQG program."*



# ITEMS WE ACCEPT

Acetone  
Acids/bases  
Adhesives  
Aerosol products  
Alcohol  
Ammonia  
Antifreeze  
Artist's paints and media  
Automotive products (no motor oil)  
Batteries, rechargeable & lithium  
Batteries, automotive  
Battery acid  
Butane  
Camp fuels/sterno  
Car wax  
Carpet spotters and cleaners  
Caulk, flammable  
Cell phones  
Charcoal starter  
Cleaners and cleansers\*  
Computers & peripherals  
Contact cement  
Deck stains, cleaners, brighteners  
Degreasers  
Disinfectants  
Drain cleaners  
Driveway sealer, solvent based  
Dry cleaning solvent  
Electronics (tv's, vcr's, etc.)  
Epoxy  
Etchants, concrete and metal  
Fertilizer with pesticides/herbicides  
Fuels and fuel additives  
Fiberglass resin and hardener  
Fire extinguishers  
Flares

Floor care products  
Flux, soldering  
Fungicides  
Fumigants  
Furniture polish  
Gasoline  
Gasoline/oil mixtures  
Glues  
Grease (no lard, fat or vegetable)  
Grout products  
Gun cleaning products  
Hair removal products  
Herbicides  
Inks & dyes  
Insect sprays and repellants  
Insecticides  
Kerosene  
Latex paint  
Lawn & garden chemicals  
Lead paint  
Light ballasts (PCB containing)  
Lighter fluid  
Linseed oil  
Lye  
Mercury & mercury devices  
Metal polish  
Mineral spirits  
Muriatic Acid  
Naphtha  
Mothballs  
Nail polish  
Nail polish remover  
Oil or solvent-based paint  
Oil & gas  
Oven cleaners

*The lists contained in this document are guidelines only, subject to change, and are not intended to be comprehensive. For additional information, please contact (608) 243-0368 or [www.danecountycleansweep.com](http://www.danecountycleansweep.com)*

Oxidizers  
Paint and varnish removers  
Paint thinner  
Parts cleaner  
Pesticides  
Photographic chemicals  
Poisons  
Pool & spa chemicals  
Propane cylinders (1 lb. type)  
Rat & rodent poison  
Roof tar  
Rust removers  
Sealers  
Shellac  
Shoe polish  
Solvents  
Solvent-containing materials  
Spray paint  
Stains  
Stump remover  
Thermometers  
Thermostats (mercury)  
Toilet bowl cleaner  
Toluene  
Turpentine  
Unknowns (<5 gallons)  
Varnish  
Waterproofing products  
Weed Killer  
Wood bleach  
Wood filler  
Wood finishes  
Wood preservatives  
Xylene  
Xylol

# WE DO NOT ACCEPT

Alkaline batteries  
Ammunition  
Appliances  
Asbestos  
Carbon monoxide detectors  
Cement/concrete  
Compact fluorescent lamps  
Compressed gas cylinders  
Cooking oil  
Dried latex paint  
Empty containers  
Explosives  
Fertilizer without pesticides/herbicides  
Fireworks

Fluorescent tubes  
Garbage  
Helium & Freon tanks  
Ink & toner cartridges  
Lead paint chips  
Medical sharps  
Medications  
Motor oil & oil filters  
Prescription drugs  
Propane cylinders (20 lb. type)  
Recyclables (cans, bottles, etc.)  
Smoke detectors  
Single-use disposable batteries  
Water-based cleaners\*

*Water-based cleaners (Windex, dish soap, etc.) may be accepted for product exchange purposes, provided that sufficient product remains in the container to make it useful to others.*

**For more information please call (608) 243-0368 or visit [www.danecountycleansweep.com](http://www.danecountycleansweep.com) or <http://www.countyofdane.com/pwht/recycling.aspx>**



***For a fee, the Dane County Landfill may be able to accept some of the items that Clean Sweep cannot take. Contact the Dane County Landfill at (608) 838-9555 or visit the following website to learn more about the waste types accepted at the Dane County Landfill.***

***<http://www.countyofdane.com/pwht/recycle/landfill.aspx>***





# CLEAN SWEEP FACILITY

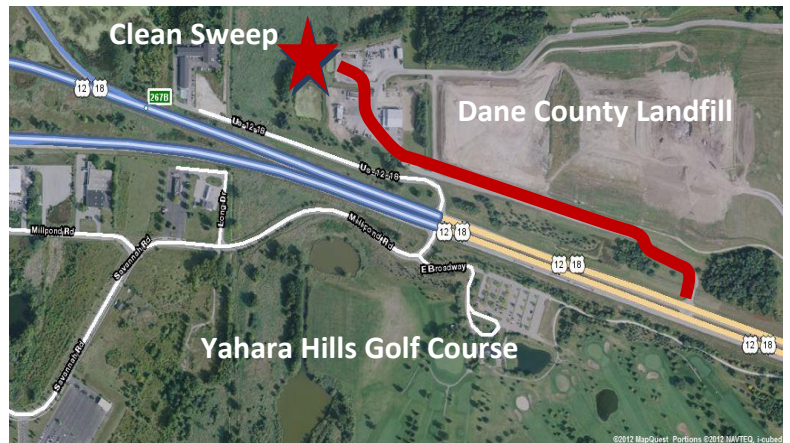
## Location

Dane County Rodefeld #2 Landfill 7102  
US Hwy 12/18, Madison WI 53718

## Hours of Operation

Tuesday - Friday: 7:00 - 2:45  
Saturday: 8:00 - 10:45

Closed Sundays, Mondays and Holidays.



*Dane County's state-of-the-art recycling/transfer/clean sweep facility is a key component of the County Executive's comprehensive solid waste strategy that will extend the life of the county's current landfill site another three decades. This facility allows the Clean Sweep program to operate year round. The facility contains many green features that will reduce storm water runoff from leaving the grounds, and translucent light panels that reduces the need for electric light. The building is heated with the waste heat generated by the landfill's generator engines that convert landfill gas to renewable electricity for Dane County homes and businesses.*



## Fee Structure



**Dane County Households & Farms:** \$10 per trip for household hazardous wastes and electronics

- 1st CRT TV or CRT computer monitor free with paid trip fee. Additional CRT TV's and CRT computer monitors will be charged \$10 per device, no fees for other electronics.

**Businesses:** Fees based on weight and type of waste

- Businesses must qualify as Very Small Quantity Generators (VSQG's) and must schedule an appointment prior to bringing wastes to the collection facility. Out-of-County businesses are welcome. Call (608) 243-0368 for more information.

**Out-of-County Households & Farms:** \$75 per trip

- No latex paint or electronics accepted from out-of-county residents

*We reserve the right to impose additional fees for large quantities of materials or loads from multiple households. Customers with large loads are urged to call (608)243-0368 in advance to determine the applicability of any additional fees.*

## Latex Paint



Latex paint is not hazardous and can be safely thrown away with your regular trash once it is solid. Simply leave the lid off and mix in kitty litter or latex paint hardener to speed up the process. Once it is solid, place the can in your trash with the lid off so your waste hauler can see that it is dry.

Dane County Clean Sweep will only accept latex paint if the paint cans are at least ½ full and the paint is still in liquid form. Cans less than ½ full or containing dried/solid paint will be returned to the customer.



# Electronics



Electronics will be accepted from Dane County residents/households only. Fees apply to CRT TV's and CRT computer monitors. **NO ELECTRONICS ACCEPTED FROM BUSINESSES.** All electronic materials will be responsibly handled in an environmentally safe and secure manner, using the best data wiping software available. Electronic materials accepted at Dane County Clean Sweep include: **Monitors, laptops, servers, TV's, printers, computers, printer/fax/scanners, DVD players, stereo equipment, VCR's, video game consoles, computer peripherals, mice/keyboards, PDA/cell phones, all computer parts, MP3/iPods/etc., telephones, UPS batteries, networking equipment, and cable boxes, radios, digital clocks, digital cameras, and remotes.**

**ALL BATTERIES MUST BE REMOVED FROM ELECTRONIC ITEMS.** The listing of the types of electronic materials accepted at Dane County Clean Sweep is subject to change. For current listings, please call (608) 243- 0368 or visit [www.danecountycleansweep.com](http://www.danecountycleansweep.com) or <http://www.countyofdane.com/pwht/recycling.aspx>.



## Product Exchange

Dane County's household hazardous waste facility features a larger area devoted to product reuse and exchange. Products that are received in good condition are stocked on the shelves of the product exchange room for redistribution to the public. This program is FREE to Dane County residents (non-residents are prohibited). In order to promote safety, discourage hoarding and facilitate fair distribution of product exchange materials to the general public, **product exchange customers will be allowed a single entry per week** to the product exchange room. The amount of product taken by each customer shall be limited to an amount which the customer can physically carry in one trip to their vehicle upon exiting the building. Re-entry is prohibited. Materials taken from the product exchange room are for personal use only and are not to be resold. Product exchange customers shall not test any product, open any container or mix or combine any chemicals or containers in the product exchange room! Persons suspected of reselling or hoarding large amounts of materials taken from the Product Exchange or otherwise violating facility rules will be banned from the facility and may be held responsible for disposal costs of any returned materials.



## Preparing for your Visit

Waste materials should be packaged in boxes or rigid totes to keep products upright and prevent spillage during transportation to the collection facility. Keep materials in their original containers. **DO NOT PACK OR CO-MINGLE YOUR WASTE MATERIALS IN PLASTIC BAGS.** Individual items may be bagged in plastic if the original container is compromised. Do not mix any materials. Upon arrival at the landfill site, follow the entrance road and the blue line directly to the Clean Sweep building. You will be asked to furnish proof of residency. If you have items or materials that are subject to fees, you will pay at this point. Payment is to be in the form of cash or credit card (Visa or Mastercard only). No checks or currency larger than \$20 bills are accepted. After payment of fees, Clean Sweep staff will then assist you in unloading your vehicle. Facility operators reserve the right to refuse any waste or material deemed unacceptable. If you are bringing gasoline or other fuels to Clean Sweep, remember to transport your fuel in an approved container (no more than 6 gal. size). Clean Sweep staff will pour off the fuels and return your container, time permitting. Unapproved or unsafe fuel containers will not be returned.



## Small Business and VSQG Program

Businesses classified as Very Small Quantity Generators (VSQG) can dispose of their hazardous waste simply by scheduling an appointment and dropping it off at the Clean Sweep facility for a cost far less than would be incurred by contracting with commercial hazardous waste haulers. The Wisconsin Department of Natural Resources defines a VSQG as a business that generates no more than 220 pounds of hazardous waste per month, stores no more than 2,200 pounds of hazardous waste at any time, and generates no more than 2.2 pounds of acutely hazardous waste per month. Businesses should call (608) 838-3212 for current pricing and to schedule an appointment.

*The contents of this document are guidelines only, subject to change, and are not intended to be comprehensive. For additional information, please contact Dane County Clean Sweep at (608) 243-0368 or visit our website at [www.danecountycleansweep.com](http://www.danecountycleansweep.com)*